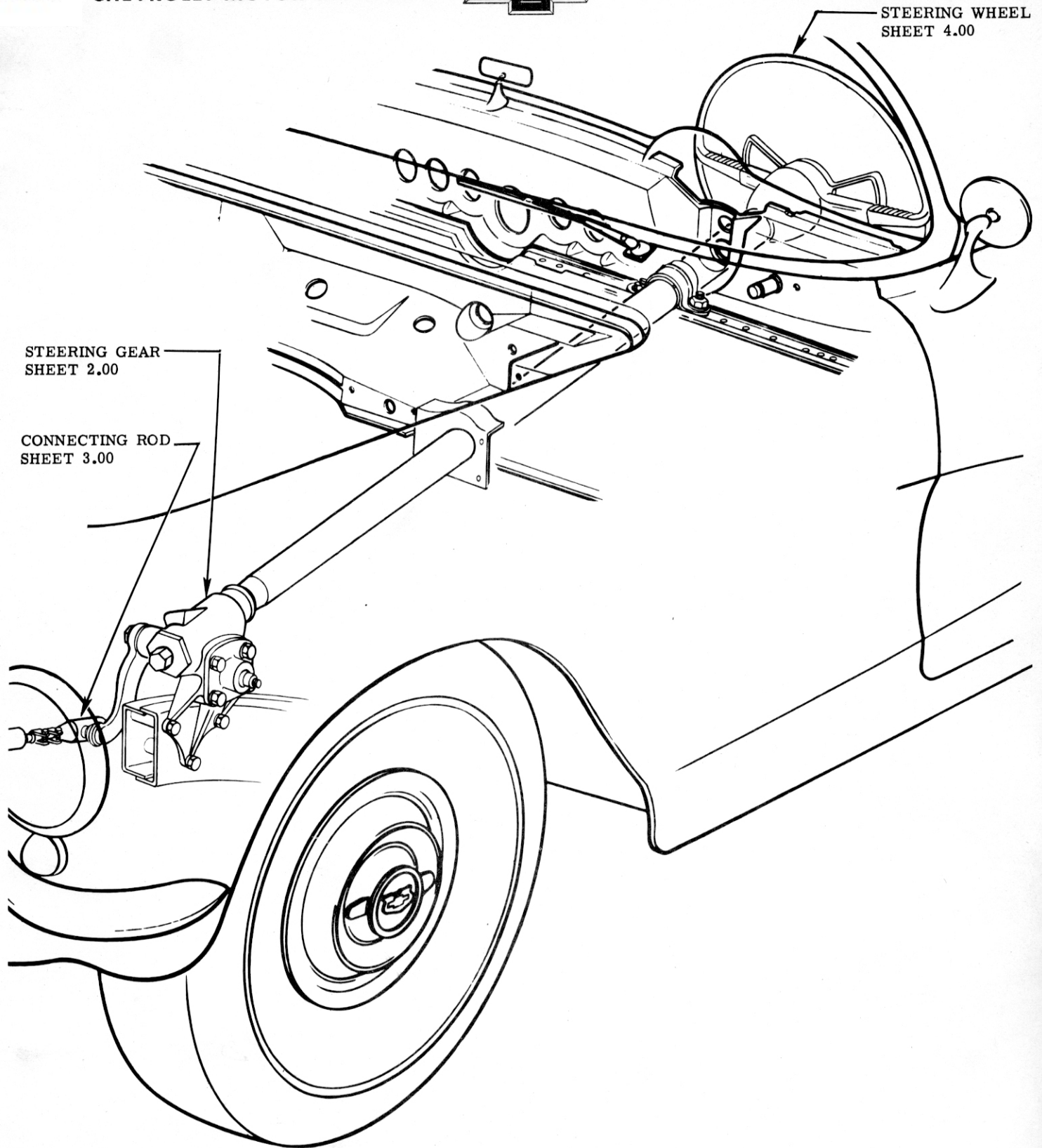


①

**STEERING**

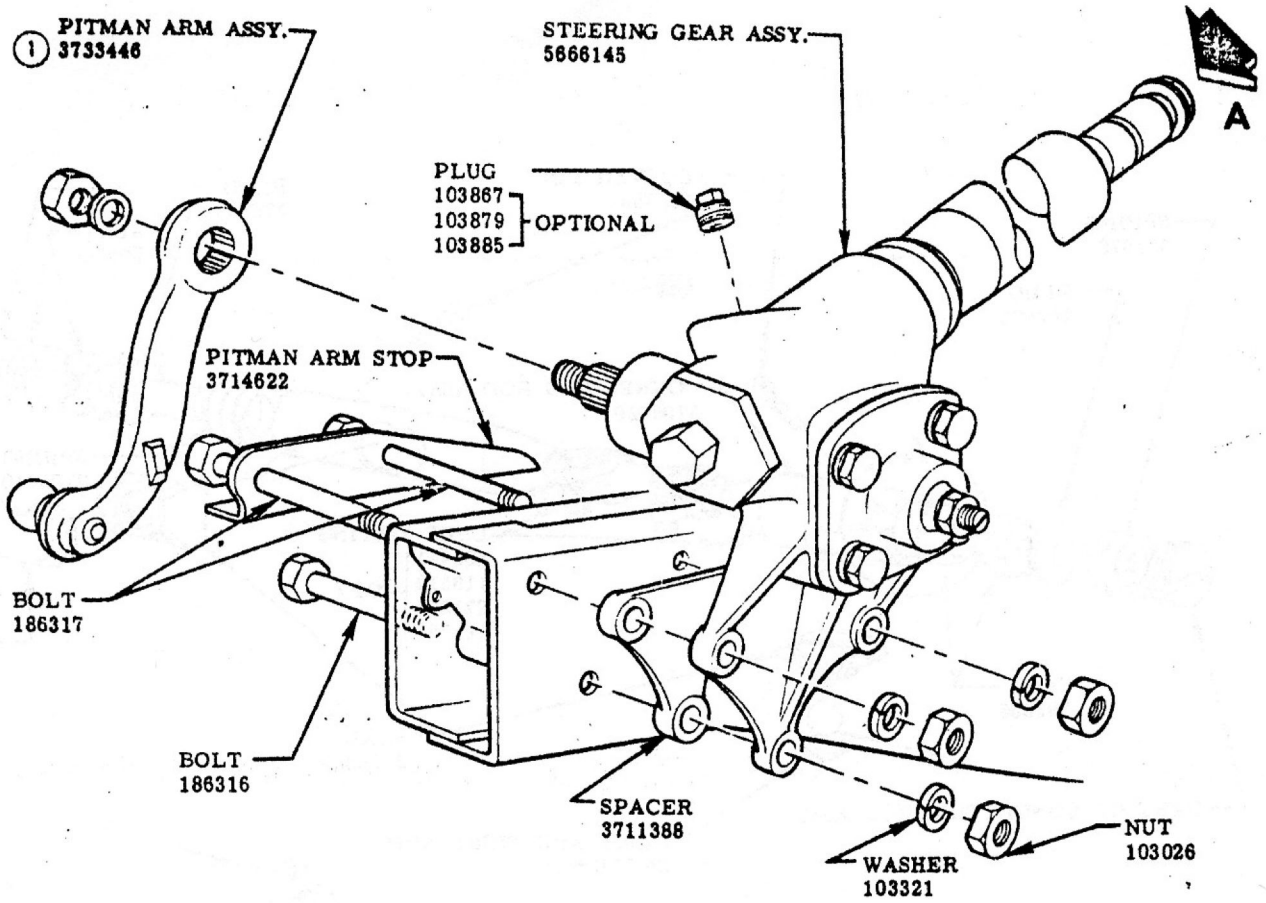
				NAME CORVETTE INSTRUCTION MANUAL				
	3	NOTE ADDED						
	2	NOTE REVISED						
12-5-55	1	NOTE REMOVED						
DATE	SYM.	REVISION RECORD	AUTH.	DR.	CK.	DATE	PART No.	SECT. SHEET
						9-15-55	3726900	9 1.00



FRONT SUSPENSION GEOMETRY  
SHEET 5.00

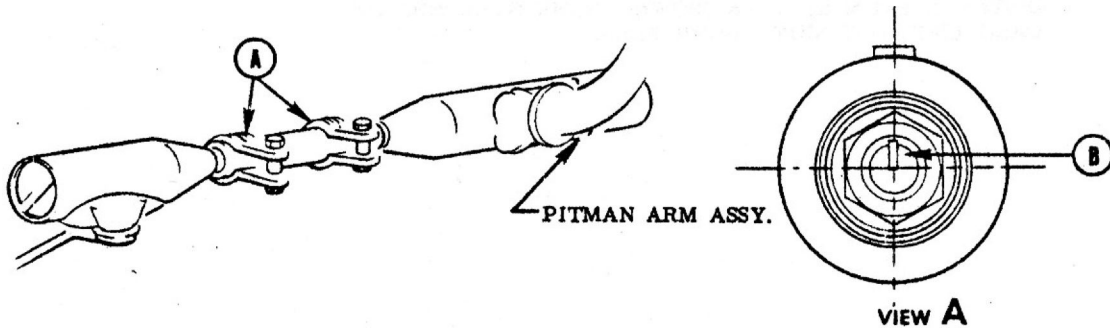
**STEERING**

						NAME	CORVETTE INSTRUCTION MANUAL			
						REF.	DRAWN W.S.	CHECKED W.M.	SECT.	SHEET
						DATE	PART No.		9	1.00
DATE	SYM.	REVISION RECORD	AUTH.	DR.	CK.	9-15-55	3726900			



STEERING GEAR ADJUSTMENT

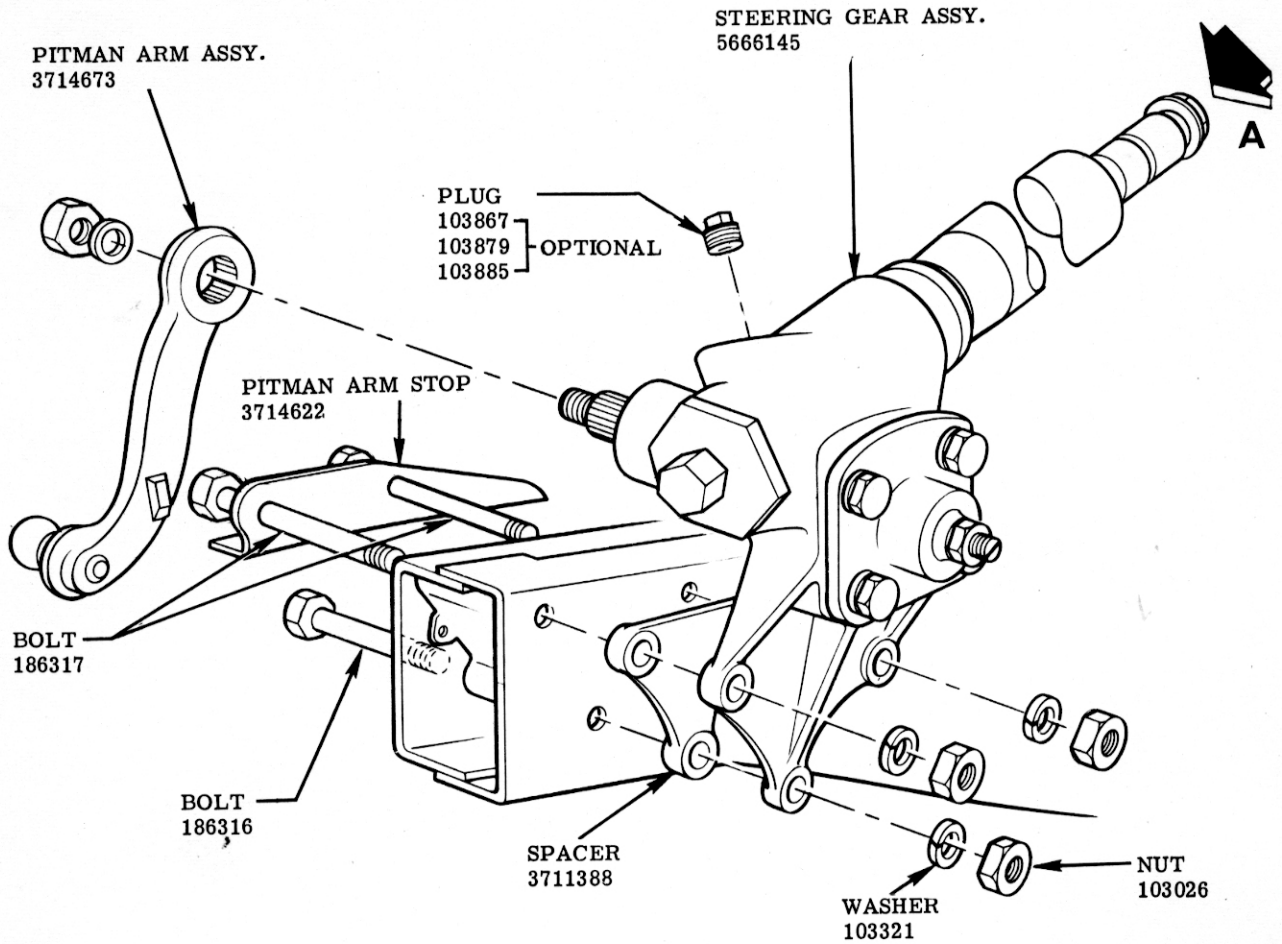
1. SET ROAD WHEELS IN STRAIGHT AHEAD POSITION.
2. LOOSEN CLAMPS (A) ON CONNECTING ROD.
3. ADJUST LENGTH OF CONNECTING ROD SO THAT THE MARK (B) IS STRAIGHT UP WHEN WHEELS ARE IN STRAIGHT AHEAD POSITION & RETIGHTEN CLAMPS (A).



SEE LUBRICATION CHART SECTION 14

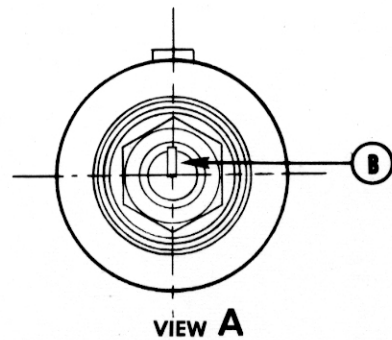
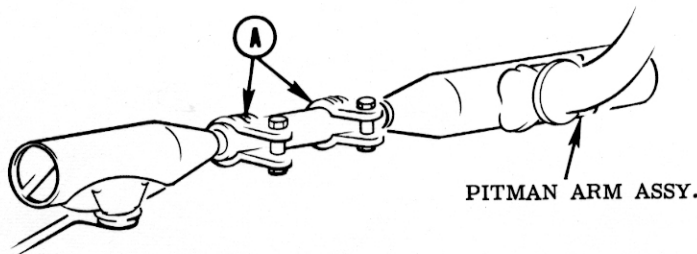
STEERING GEAR.

					NAME					CORVETTE INSTRUCTION MANUAL				
					REF.		DRAWN		CHECKED		SECT.		SHEET	
							R. M.		N. D.		9		2.00	
3-27-56					1		WAS 3714673		7730		F		DATE	
DATE					SYM.		REVISION RECORD		AUTH. DR. CK.		9-15-55		PART No. 3726900	



STEERING GEAR ADJUSTMENT

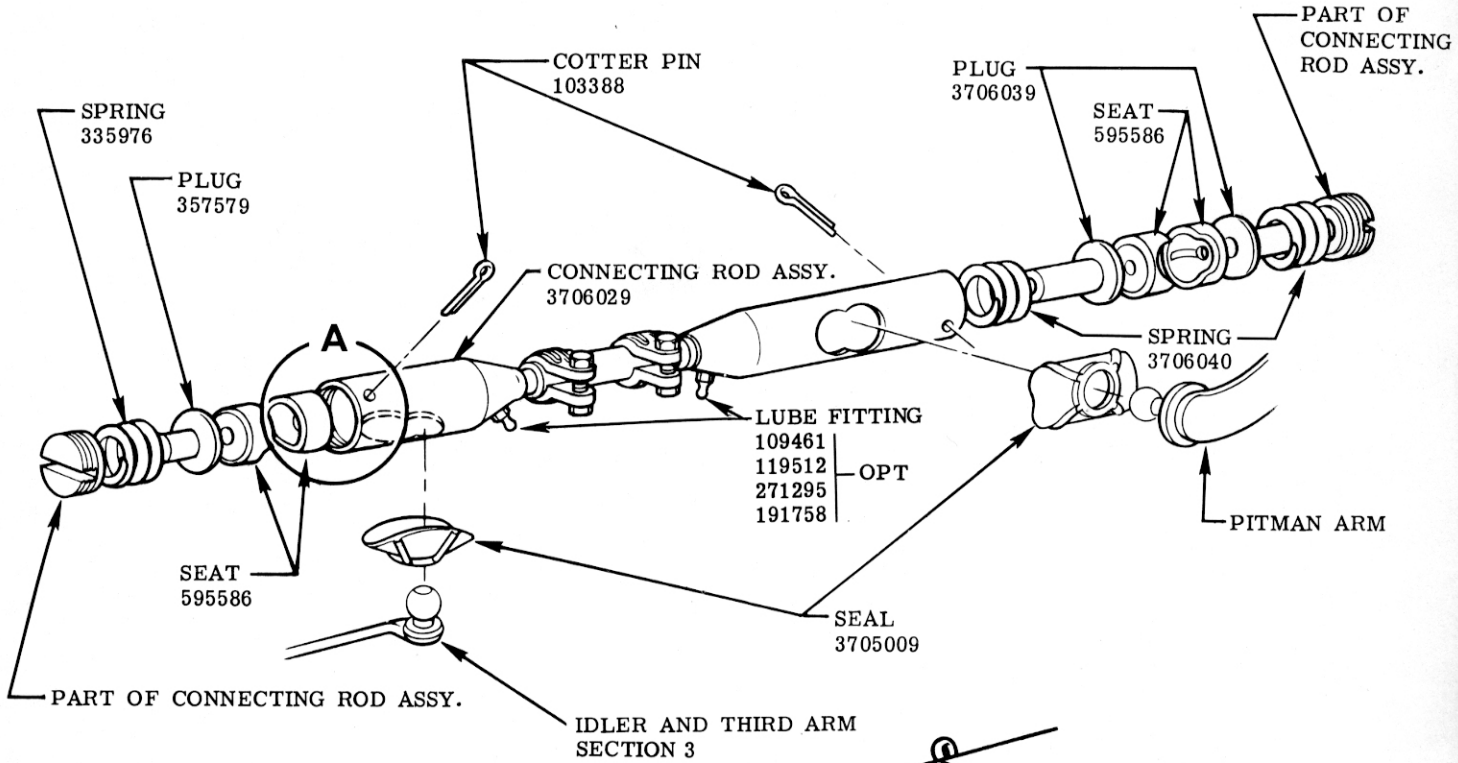
1. SET ROAD WHEELS IN STRAIGHT AHEAD POSITION.
2. LOOSEN CLAMPS (A) ON CONNECTING ROD.
3. ADJUST LENGTH OF CONNECTING ROD SO THAT THE MARK (B) IS STRAIGHT UP WHEN WHEELS ARE IN STRAIGHT AHEAD POSITION & RETIGHTEN CLAMPS (A).



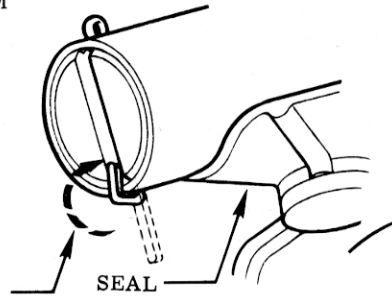
SEE LUBRICATION CHART SECTION 14

STEERING GEAR

						NAME	CORVETTE INSTRUCTION MANUAL			
						REF.	DRAWN R. M.	CHECKED N. D.	SECT.	SHEET
						DATE	PART No.		9	2.00
						9-15-55	3726900			
DATE	SYM.	REVISION RECORD	AUTH.	DR.	CK.					



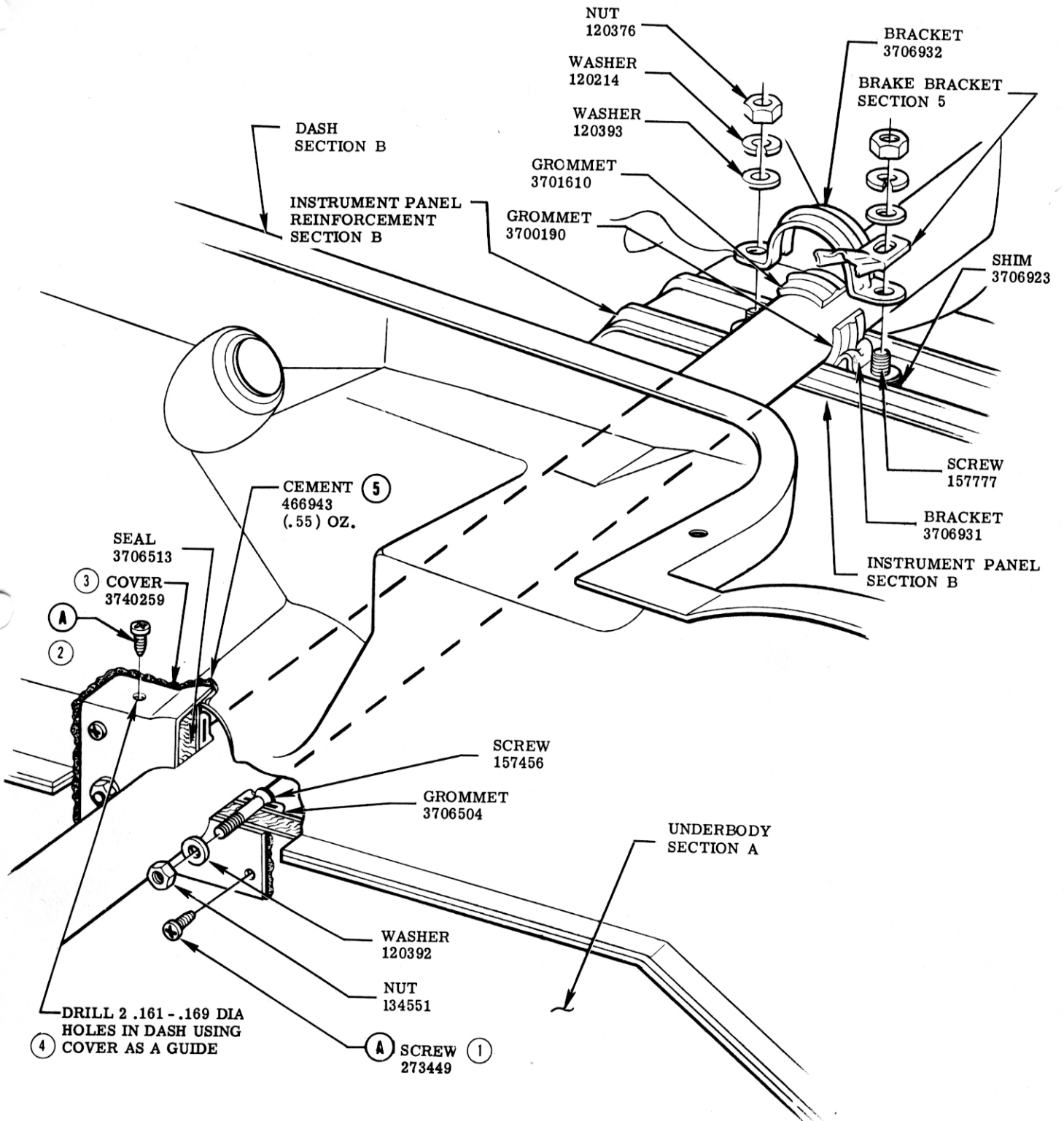
NOTE:  
 INSERT COTTER PIN IN HOLE WHICH IS THE GREATEST DISTANCE FROM SEAL AS SHOWN. BEND OVER END OF DRAG LINK, NOT SIDE. BOTH ENDS.



SEE LUBRICATION CHART SECTION 14

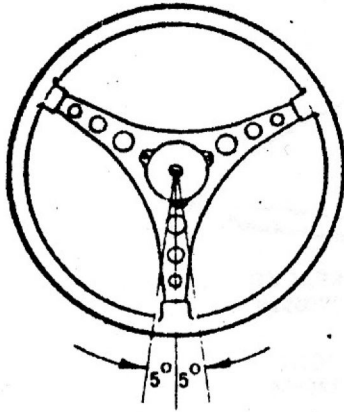
**CONNECTING ROD**

						NAME	CORVETTE INSTRUCTION MANUAL			
						REF.	DRAWN R. M.	CHECKED N. D.	SECT.	SHEET
7-31-56	1	REDRAWN & REVISED FOR 57	7615		F	DATE	PART No. 3726900		9	3.00
DATE	SYM.	REVISION RECORD	AUTH.	DR.	CK.	9-15-55				

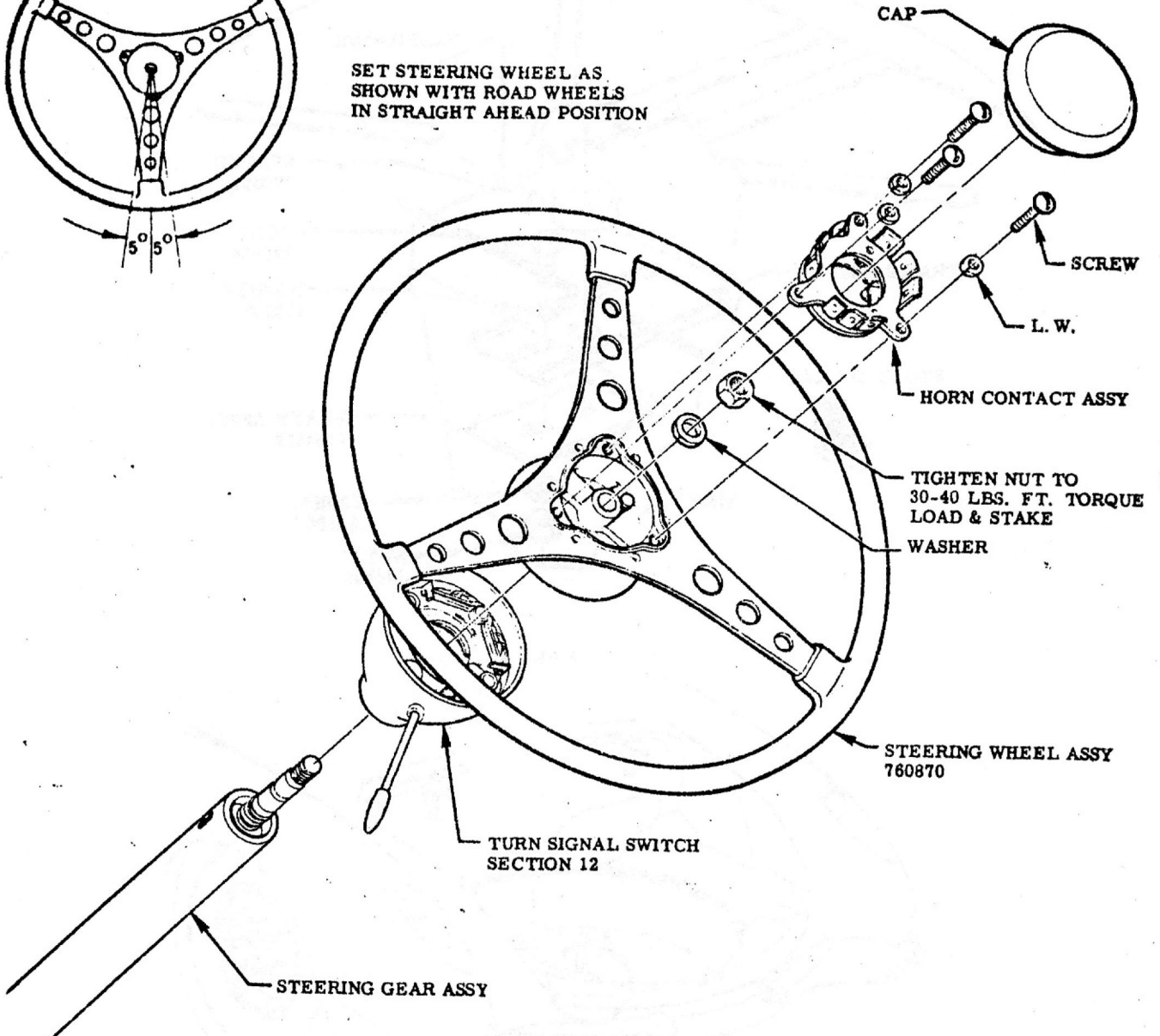


**COWL BRACKET & DASH HOLE COVER**

DATE	SYM.	REVISION RECORD	AUTH.	DR.	CK.	NAME	CORVETTE INSTRUCTION MANUAL			
11-13-56	5	PART ADDED	4059	V	F	REF.	DRAWN O.W.	CHECKED W.M.	SECT.	SHEET
	4	NOTE ADDED		V	F				9	4.00
	3	WAS 3716769				DATE	PART No.			
10-11-56	2	ADDITIONAL SCREWS ADDED	3633			9-15-55	3726900			
11-22-55	1	WAS 3706677	7816		F					



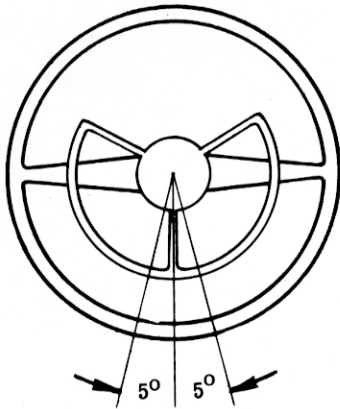
SET STEERING WHEEL AS SHOWN WITH ROAD WHEELS IN STRAIGHT AHEAD POSITION



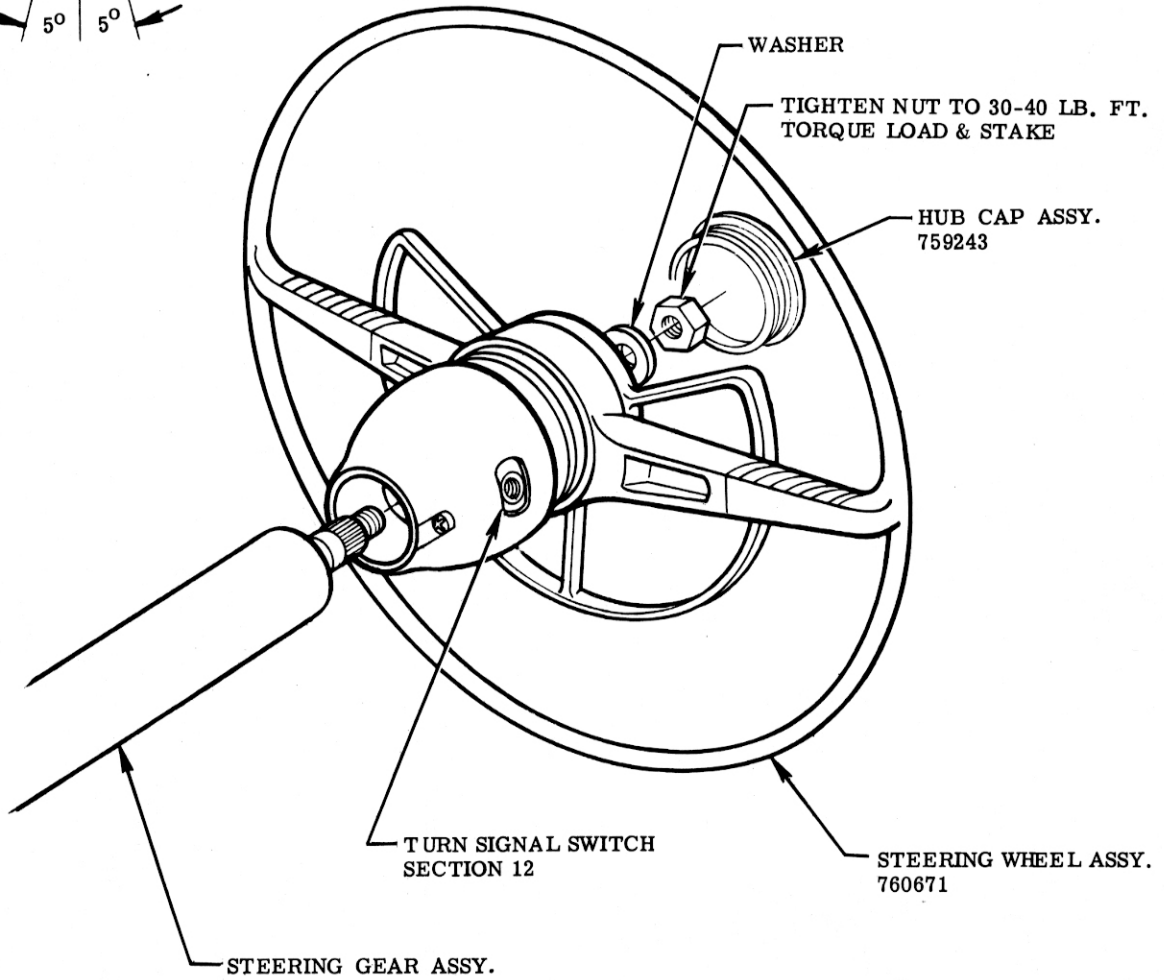
**STEERING WHEEL**

					NAME CORVETTE INSTRUCTION MANUAL				
					REF.	DRAWN	CHECKED	SECT.	SHEET
						O. W.	L. S.	9	5.00
12-5-55	1	REDRAWN & REVISED	5035	F	DATE	PART No.			
DATE	SYM.	REVISION RECORD	AUTH	DR	CK	9-15-53	3726900		





SET STEERING WHEEL AS SHOWN WITH ROAD WHEELS IN STRAIGHT AHEAD POSITION



**STEERING WHEEL**

						NAME	CORVETTE INSTRUCTION MANUAL			
						REF.	DRAWN O. W.	CHECKED L. S.	SECT.	SHEET
						DATE	PART No.		9	5.00
DATE	SYM.	REVISION RECORD	AUTH.	DR.	CK.	9-15-55	3726900			