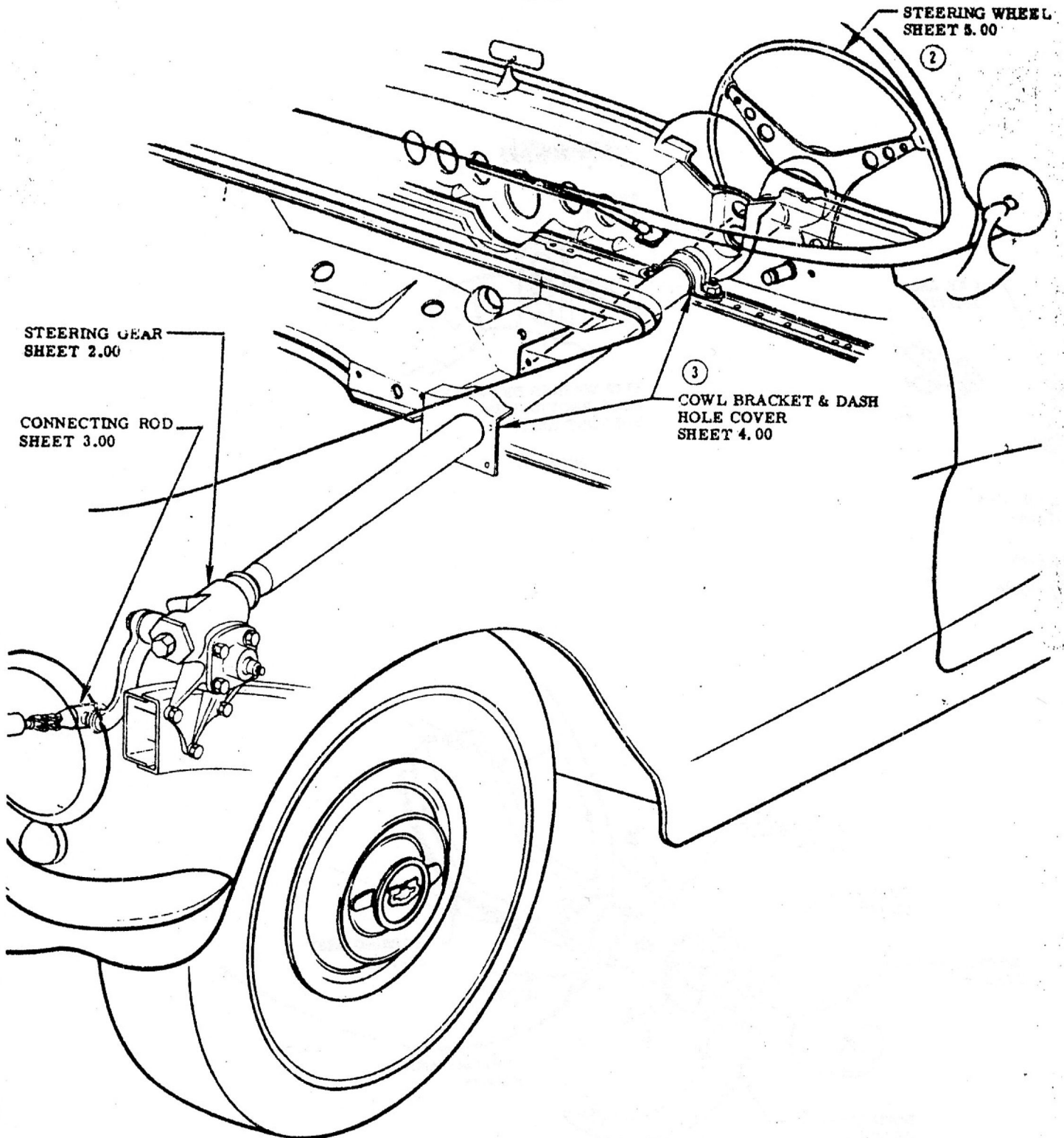


WALTON KOMI

STEERING



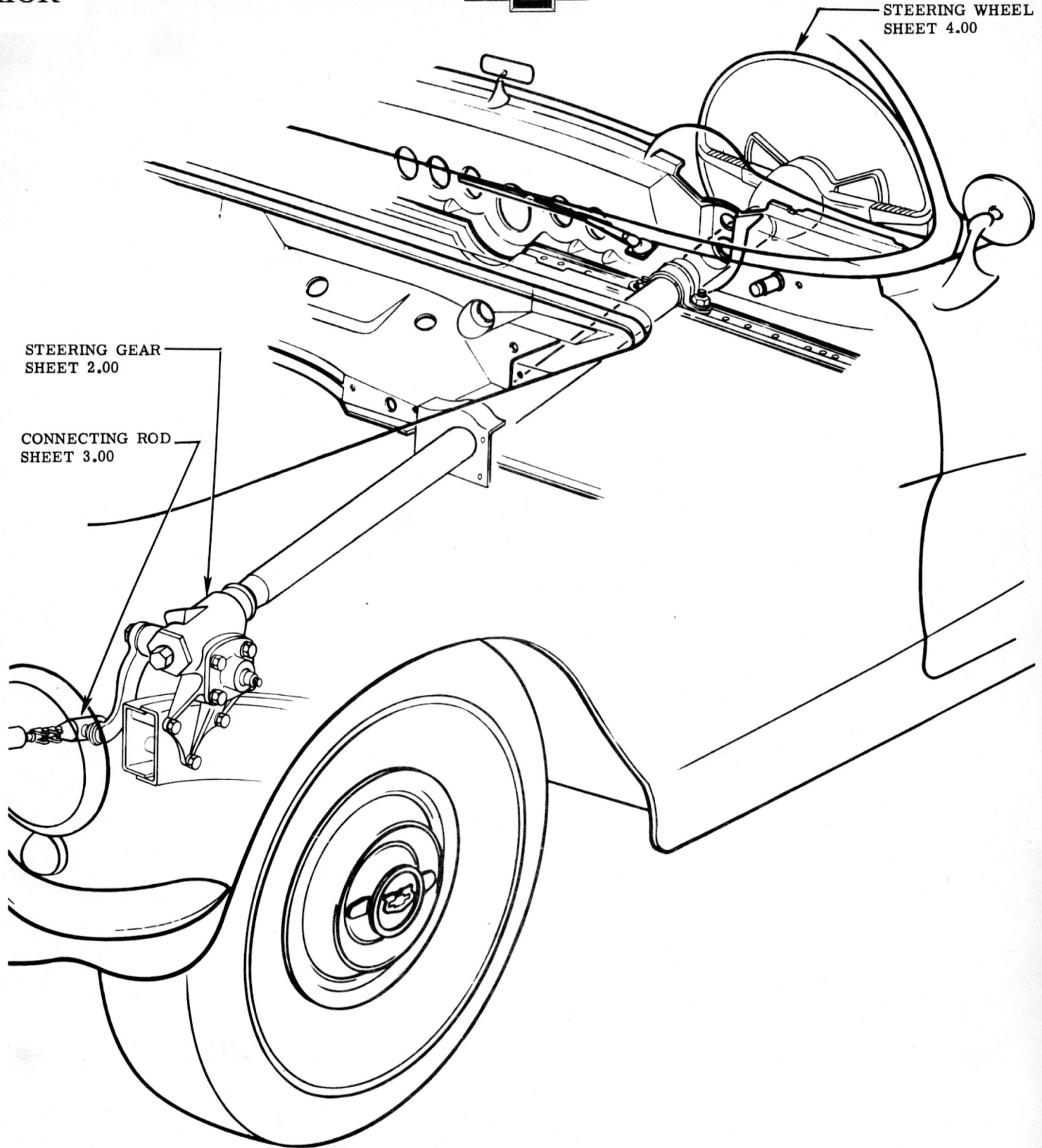
①

STEERING

				NAME					CORVETTE INSTRUCTION MANUAL				
				REF.	DRAWN W.S.		CHECKED W.M.		SECT.		SHEET		
				DATE		PART No.					9 1.00		
12-5-55				9-15-55		3726900							
DATE	SYM.	REVISION RECORD		AUTH.	DR.	CK.							
	3	NOTE ADDED				F							
	2	NOTE REVISED											
	1	NOTE REMOVED											



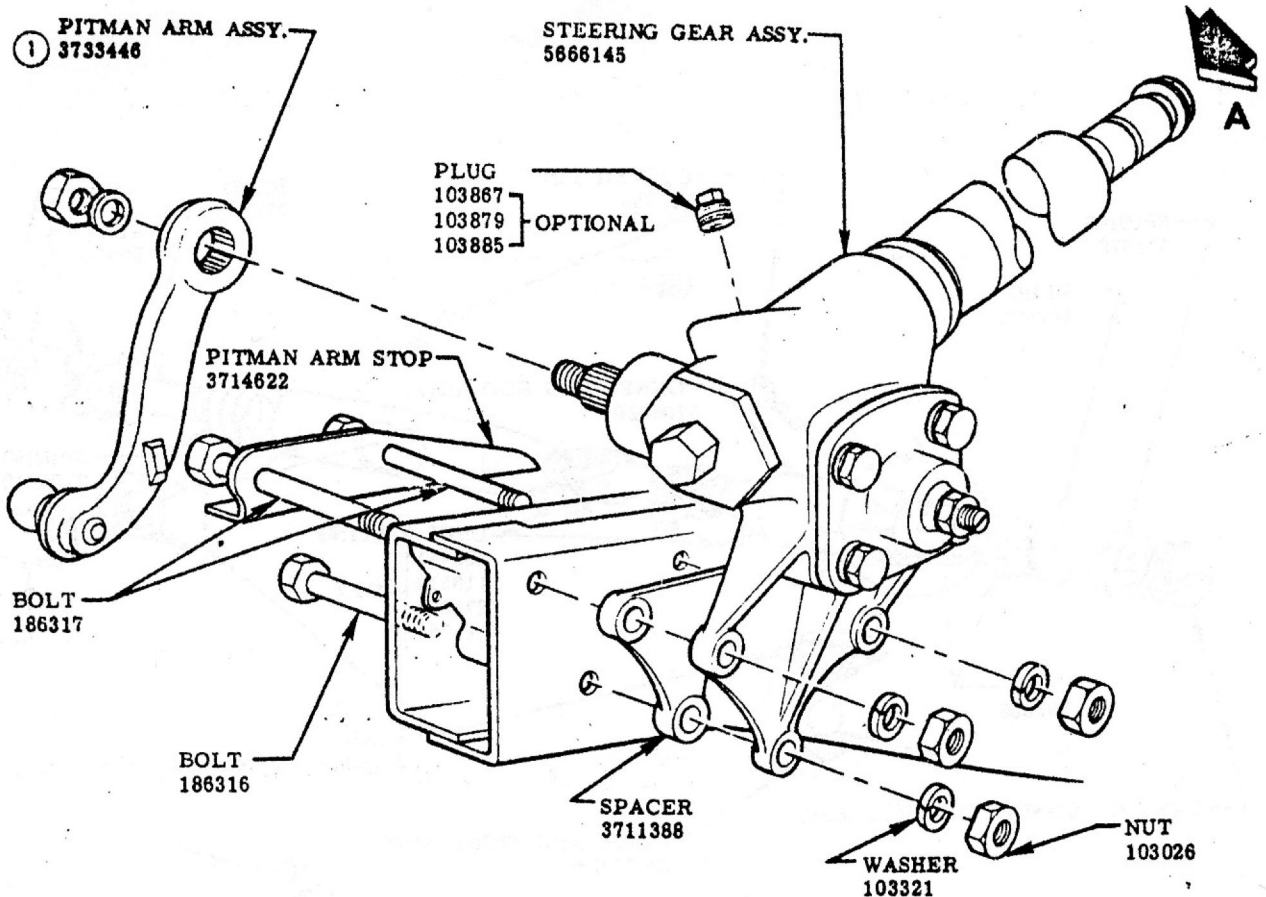
STEERING WHEEL
SHEET 4.00



FRONT SUSPENSION GEOMETRY
SHEET 5.00

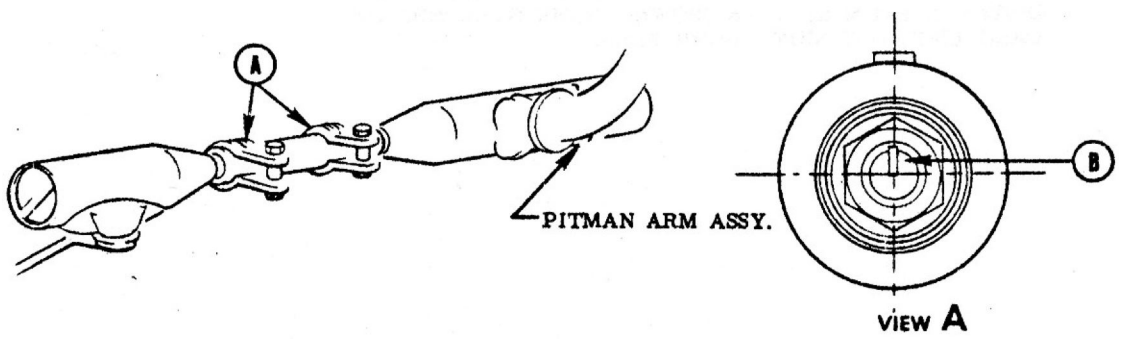
STEERING

						NAME	CORVETTE INSTRUCTION MANUAL			
						REF.	DRAWN W.S.	CHECKED W.M.	SECT.	SHEET
						DATE	PART No.	3726900	9	1.00
DATE	SYM.	REVISION RECORD	AUTH.	DR.	CK.	9-15-55				



STEERING GEAR ADJUSTMENT

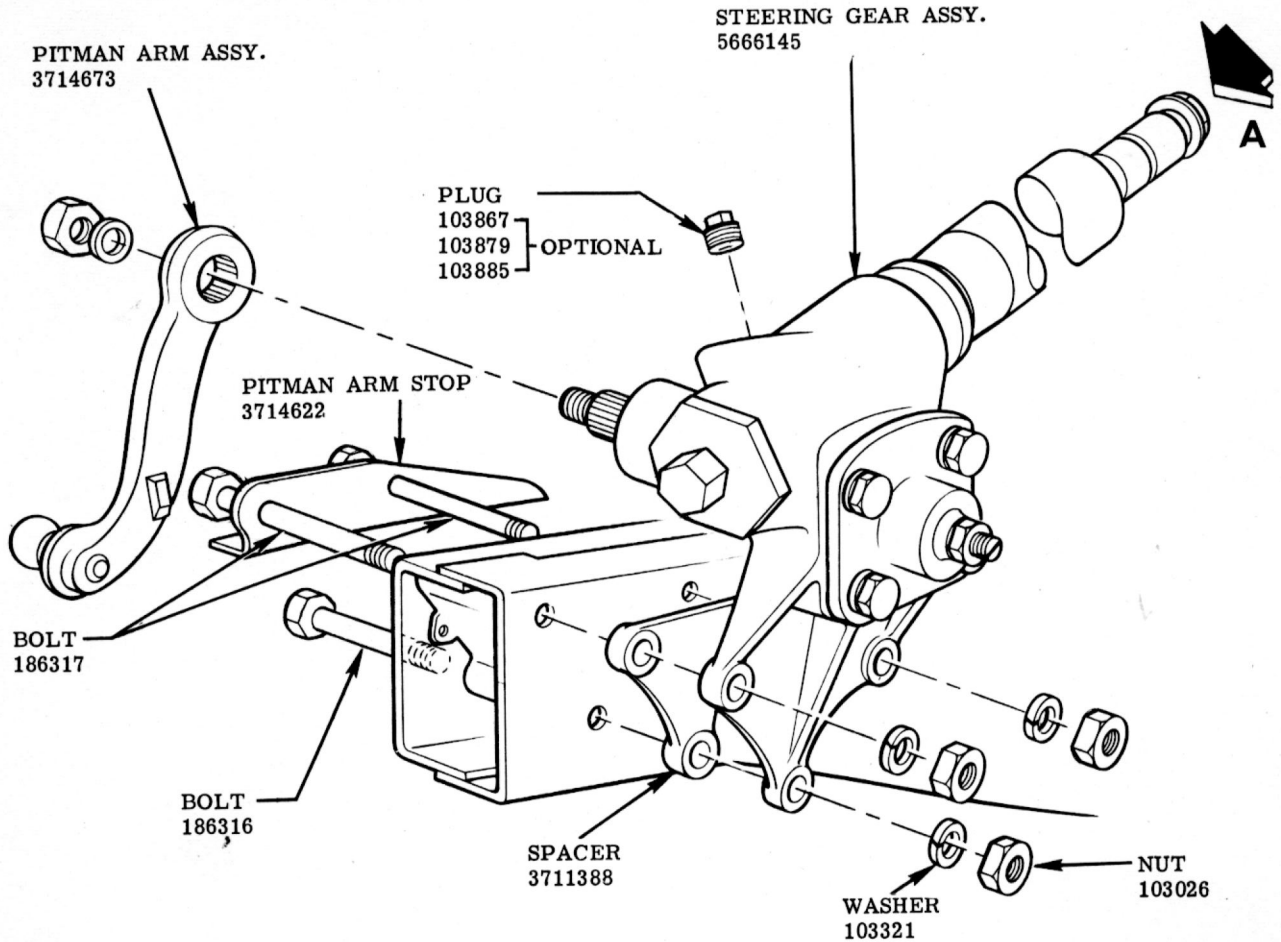
1. SET ROAD WHEELS IN STRAIGHT AHEAD POSITION.
2. LOOSEN CLAMPS (A) ON CONNECTING ROD.
3. ADJUST LENGTH OF CONNECTING ROD SO THAT THE MARK (B) IS STRAIGHT UP WHEN WHEELS ARE IN STRAIGHT AHEAD POSITION & RETIGHTEN CLAMPS (A).



SEE LUBRICATION CHART SECTION 14

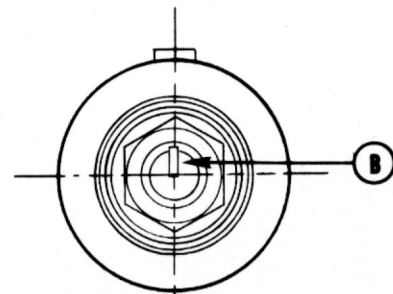
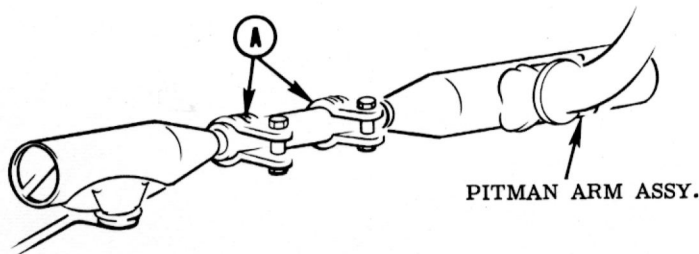
STEERING GEAR.

					NAME					CORVETTE INSTRUCTION MANUAL				
					REF.		DRAWN R.M.		CHECKED N.D.		SECT.		SHEET	
3-27-56					1		WAS 3714673		7730		F		DATE 9-15-55	
DATE					SYM.					REVISION RECORD				
					AUTH.		DR.		CK.		PART No.		3726900	
											9		2.00	



STEERING GEAR ADJUSTMENT

1. SET ROAD WHEELS IN STRAIGHT AHEAD POSITION.
2. LOOSEN CLAMPS (A) ON CONNECTING ROD.
3. ADJUST LENGTH OF CONNECTING ROD SO THAT THE MARK (B) IS STRAIGHT UP WHEN WHEELS ARE IN STRAIGHT AHEAD POSITION & RETIGHTEN CLAMPS (A).

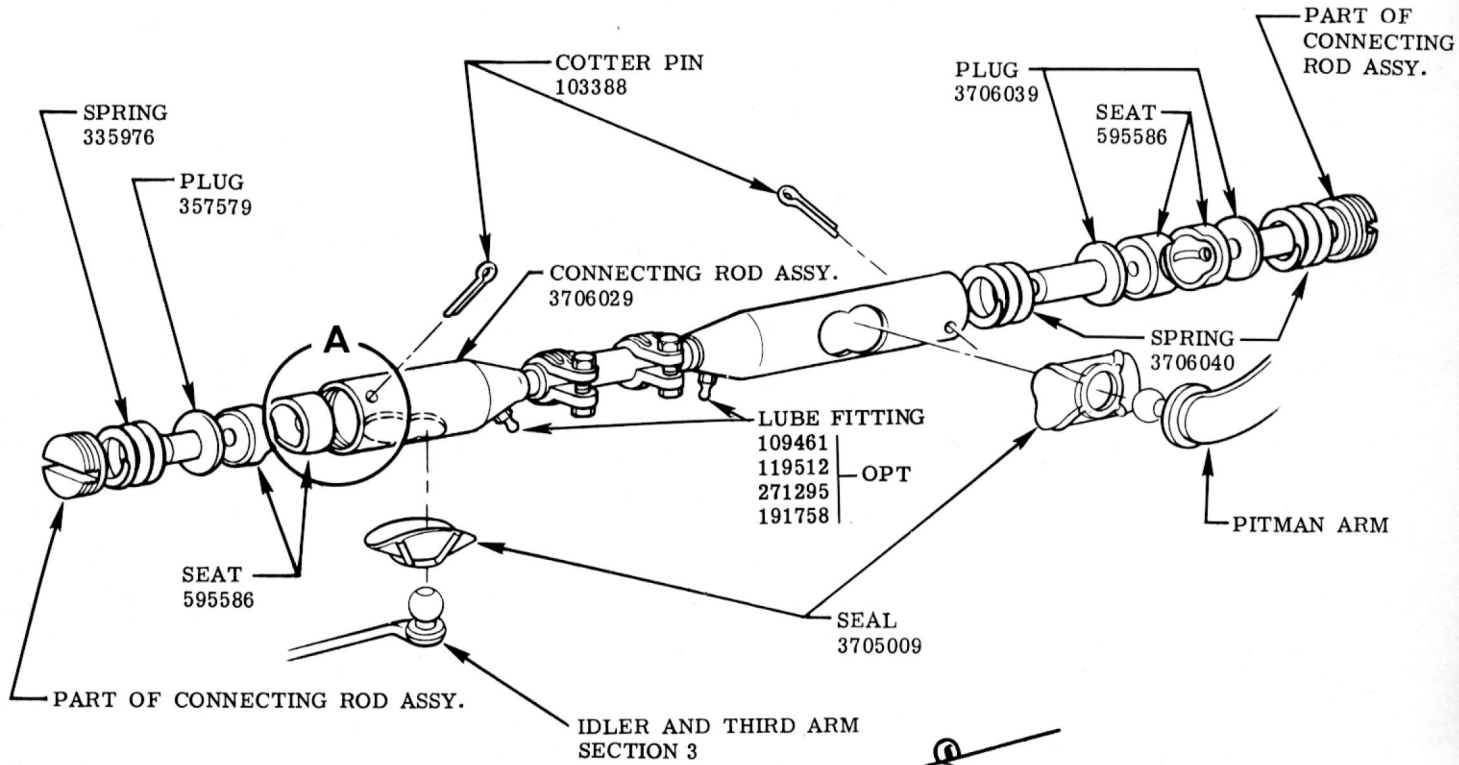


VIEW A

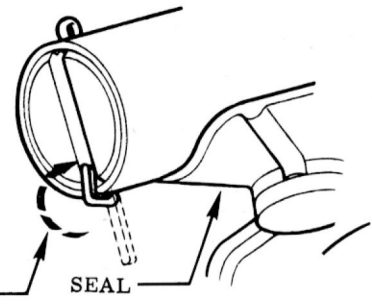
SEE LUBRICATION CHART SECTION 14

STEERING GEAR

					NAME					CORVETTE INSTRUCTION MANUAL					
					REF.		DRAWN R.M.		CHECKED N.D.		SECT.		SHEET		
					DATE		PART No.				9		2.00		
					9-15-55		3726900								
DATE	SYM.	REVISION RECORD	AUTH.	DR.	CK.										



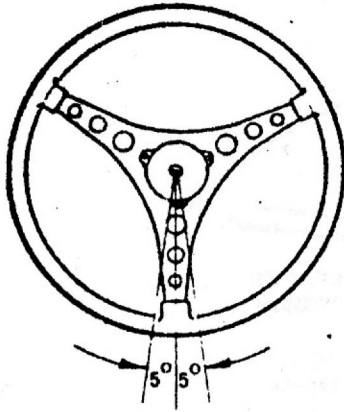
NOTE:
 INSERT COTTER PIN IN HOLE WHICH IS THE GREATEST DISTANCE FROM SEAL AS SHOWN. BEND OVER END OF DRAG LINK, NOT SIDE. BOTH ENDS.



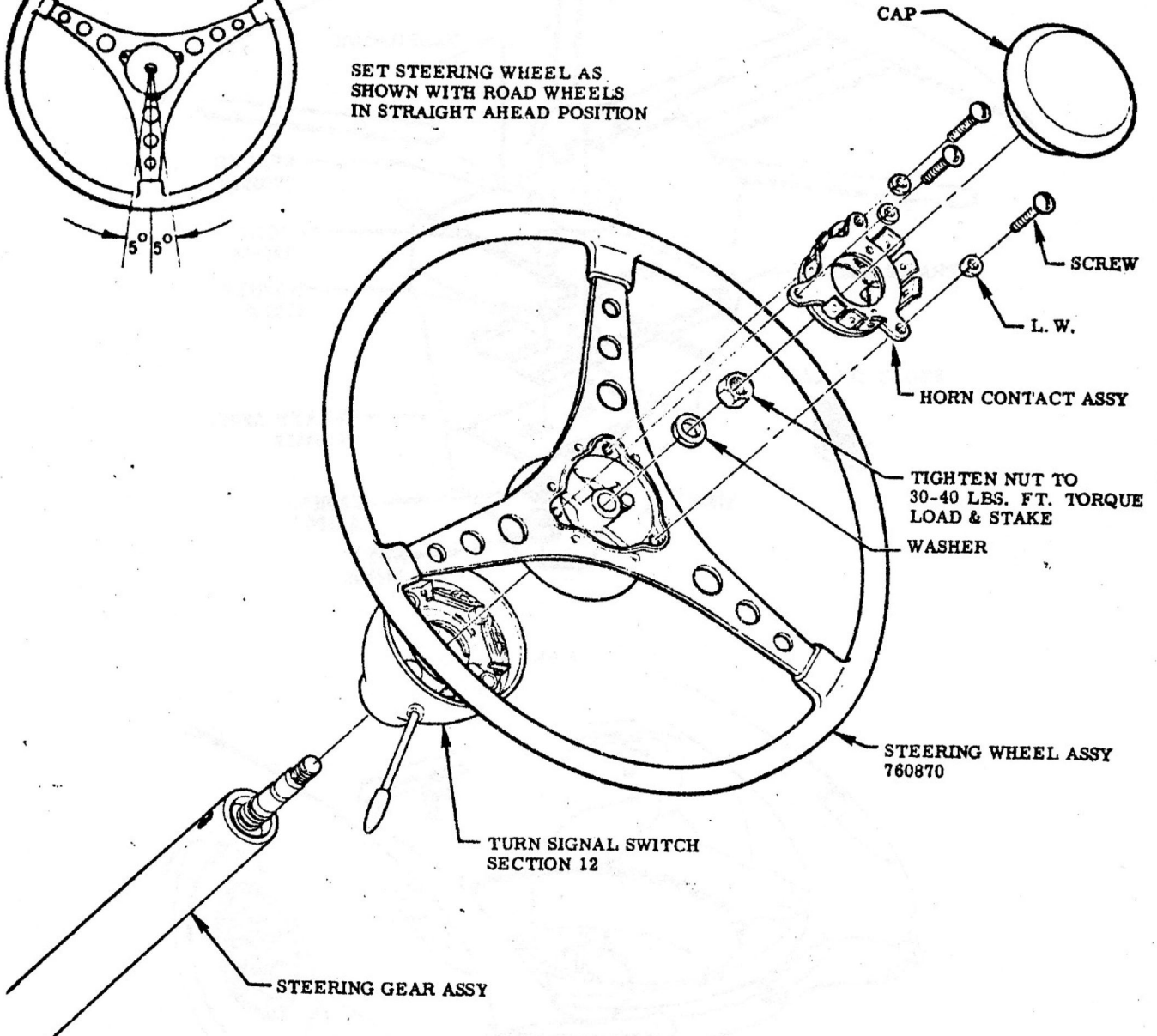
SEE LUBRICATION CHART SECTION 14

CONNECTING ROD

						NAME	CORVETTE INSTRUCTION MANUAL			
						REF.	DRAWN R. M.	CHECKED N. D.	SECT.	SHEET
7-31-56	1	REDRAWN & REVISED FOR 57	7615		F	DATE	PART No. 3726900		9	3.00
DATE	SYM.	REVISION RECORD	AUTH.	DR.	CK.	9-15-55				

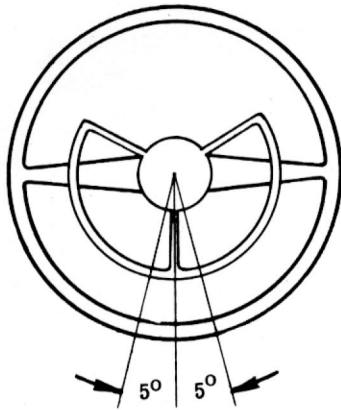


SET STEERING WHEEL AS SHOWN WITH ROAD WHEELS IN STRAIGHT AHEAD POSITION

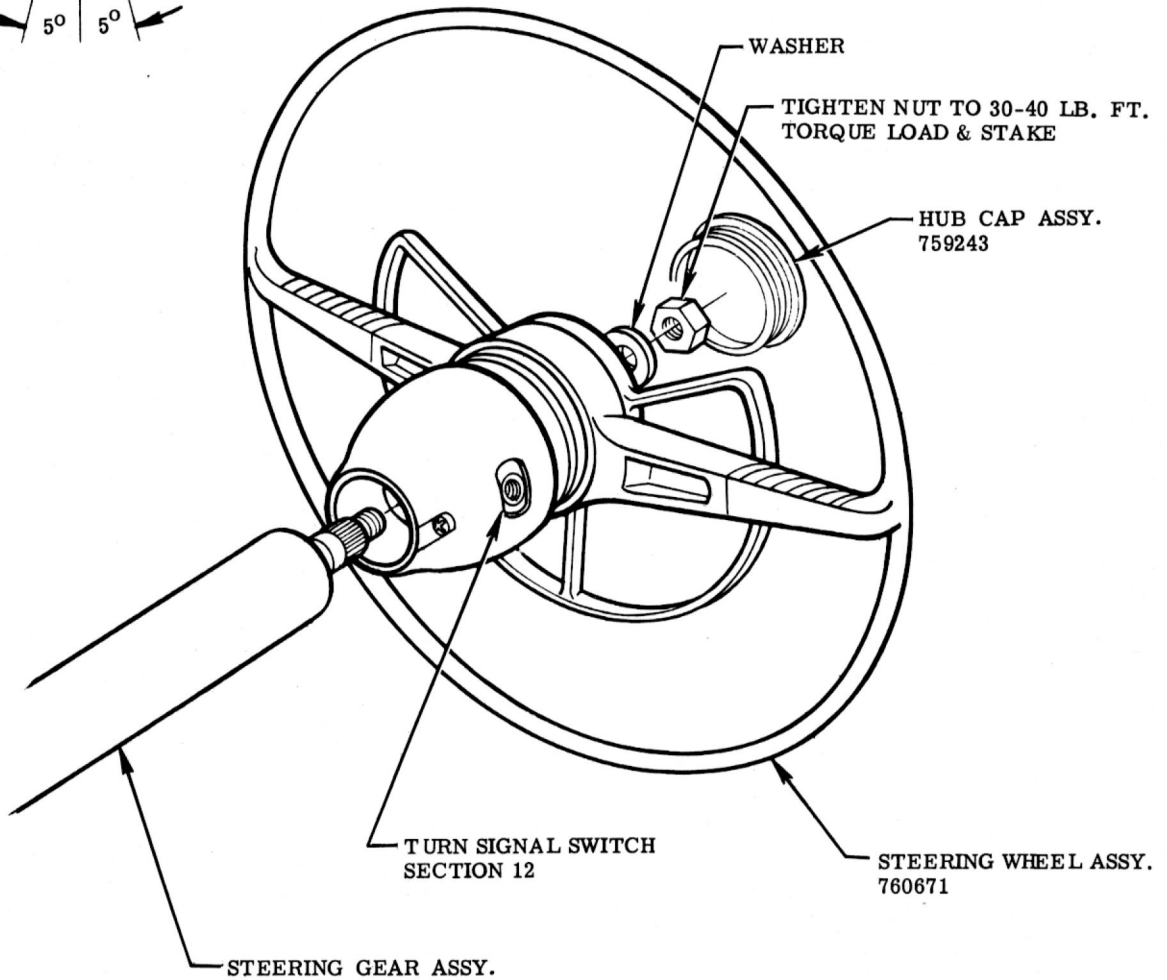


STEERING WHEEL

					NAME					CORVETTE INSTRUCTION MANUAL				
					REF.		DRAWN		CHECKED		SECT.		SHEET	
							O. W.		L. S.		9		5.00	
12-5-55					1	REDRAWN & REVISED				5035		F	DATE	
DATE	SYM.	REVISION RECORD				AUTH	DR	CK	9-15-53		PART No.		3726900	



SET STEERING WHEEL AS SHOWN WITH ROAD WHEELS IN STRAIGHT AHEAD POSITION



STEERING WHEEL

						NAME	CORVETTE INSTRUCTION MANUAL			
						REF.	DRAWN O. W.	CHECKED L. S.	SECT.	SHEET
						DATE	PART No.		9	5.00
DATE	SYM.	REVISION RECORD	AUTH.	DR.	CK.	9-15-55	3726900			