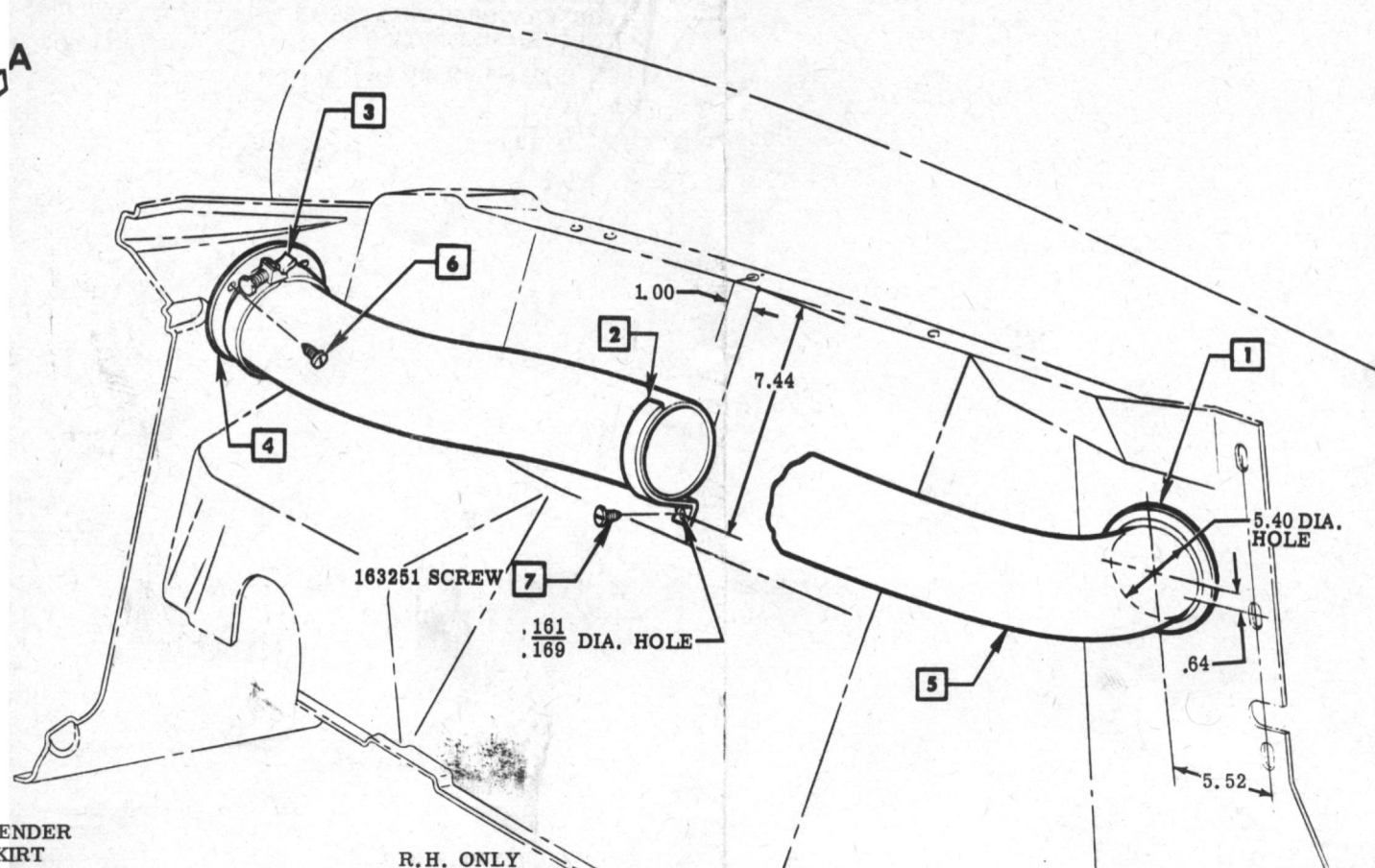
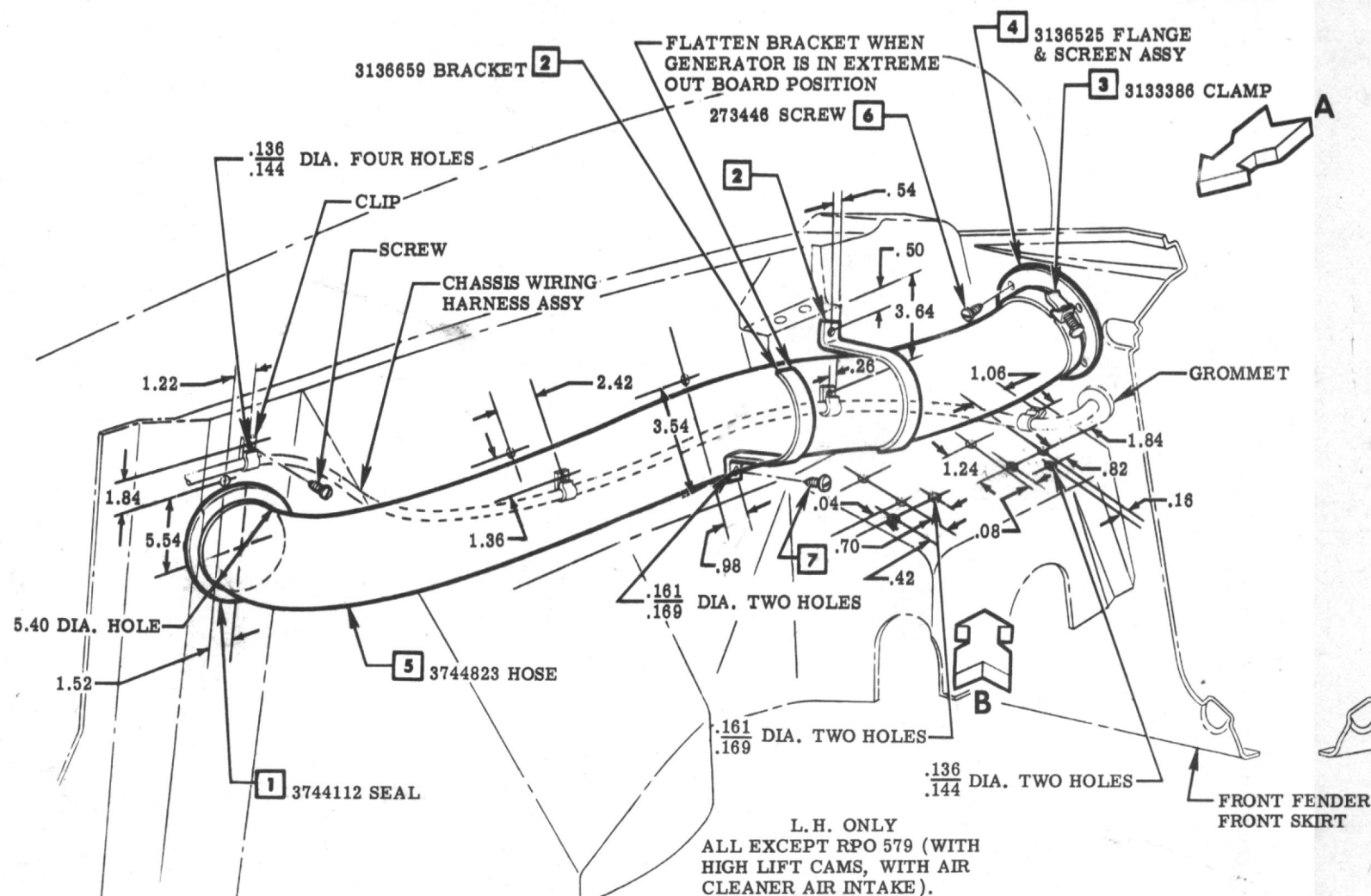
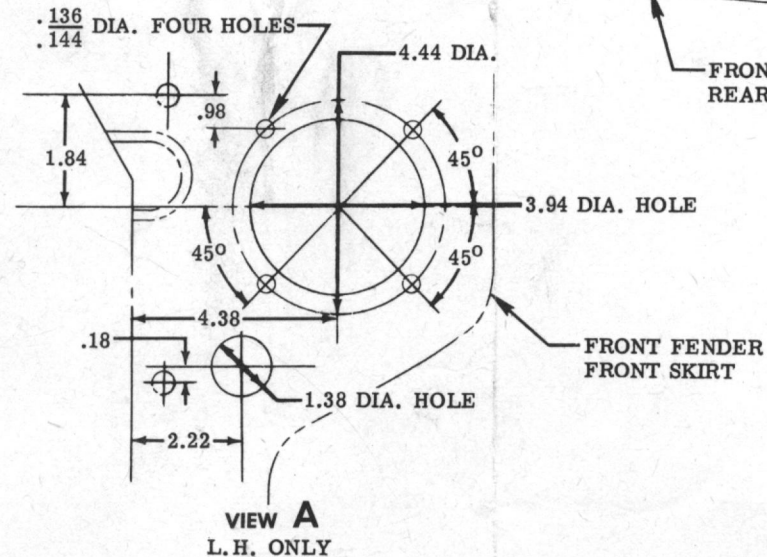
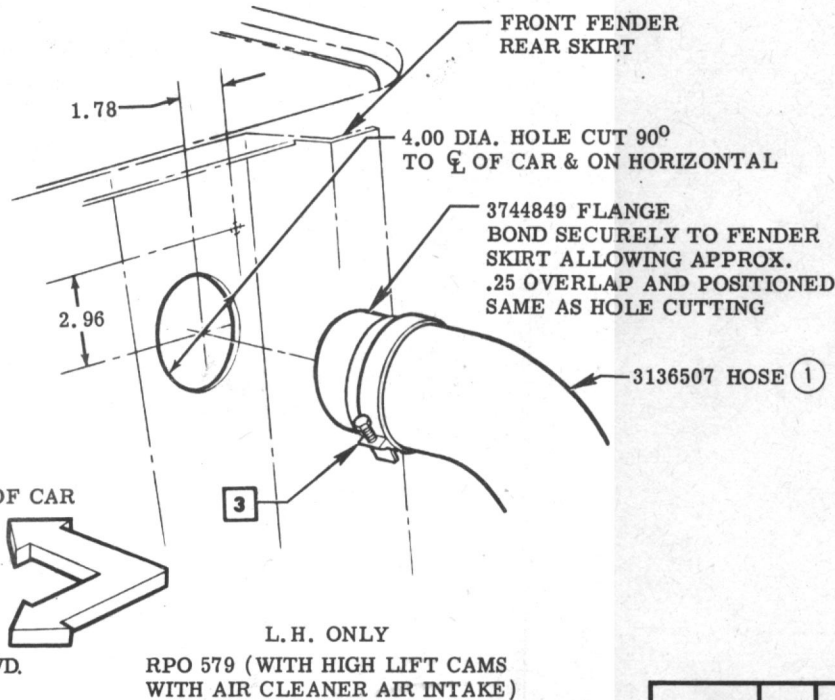
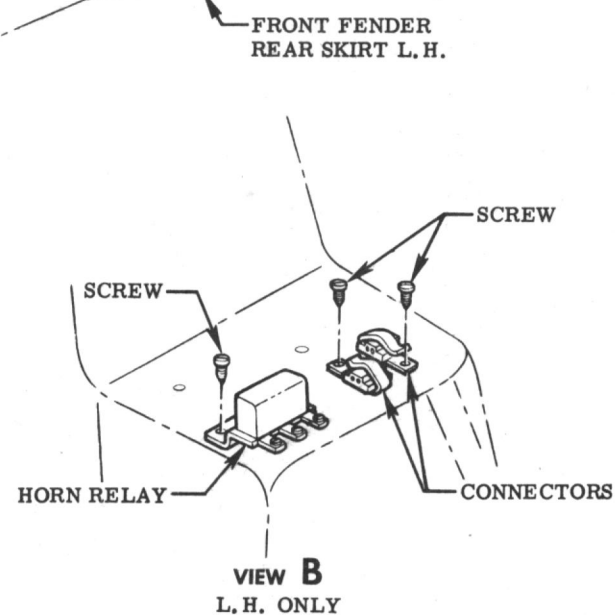


HEAVY DUTY BRAKE & SUSPENSION

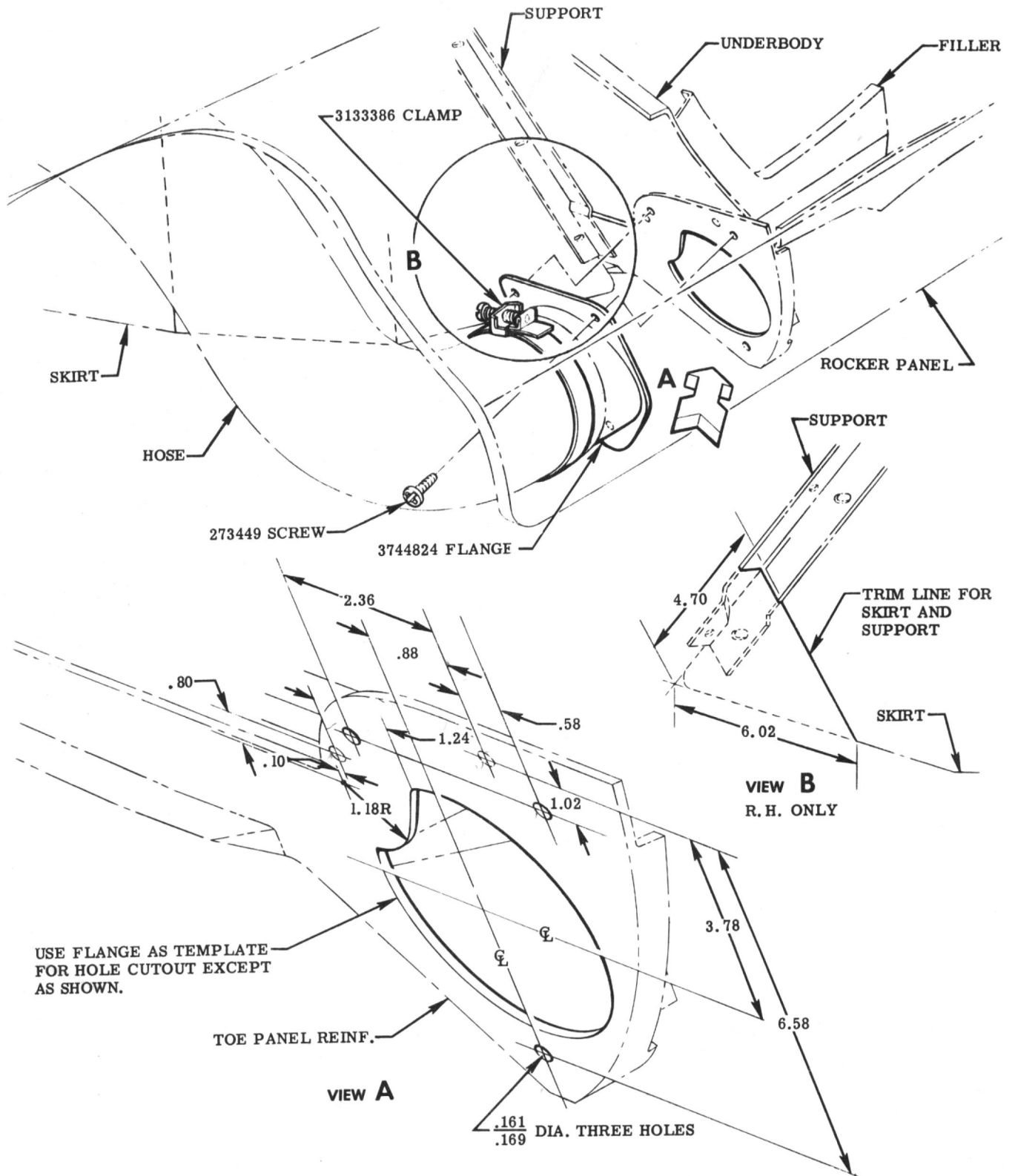
					NAME					CORVETTE INSTRUCTION MANUAL				
					REF.		DRAWN		CHECKED		R. P. O.		SHEET	
4-30-57	1	SHEET ADDED	9042	V	F			V		F				
3-25-57		RELEASED	6772											
DATE	SYM.	REVISION RECORD	AUTH.	DR.	CK.	DATE	PART No.	3726900		684		1.00		
						1-24-57								



L.H. ONLY
ALL EXCEPT RPO 579 (WITH HIGH LIFT CAMS, WITH AIR CLEANER AIR INTAKE).

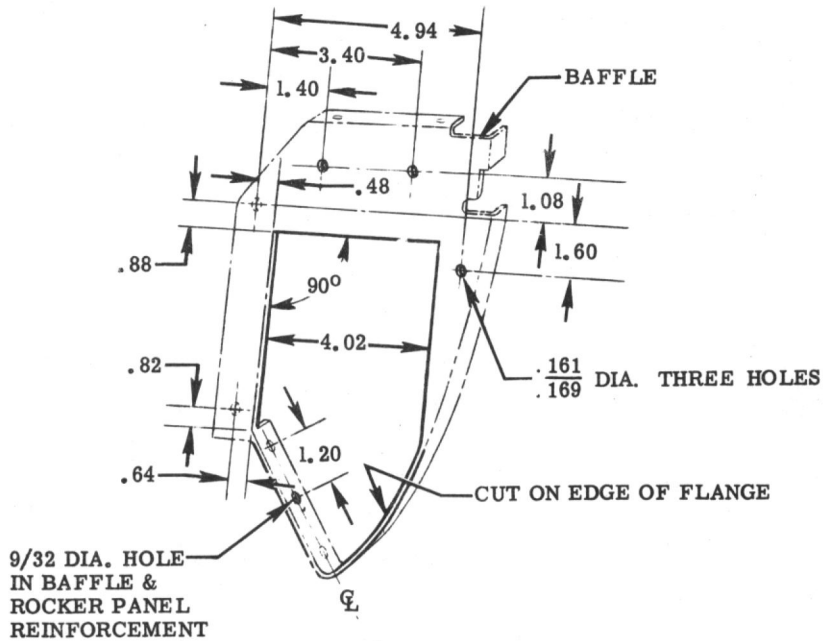
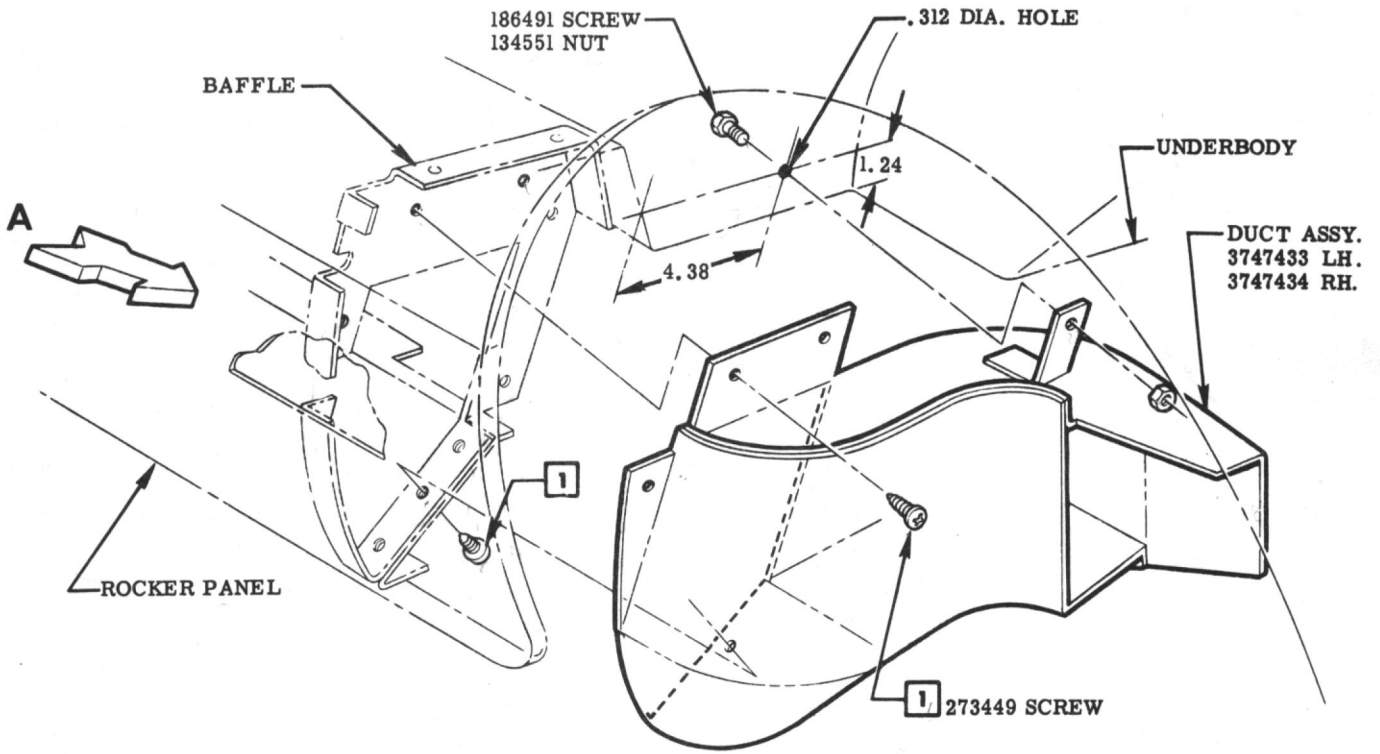


NAME							CORVETTE INSTRUCTION MANUAL			
DATE	SYM.	REVISION RECORD	AUTH.	DR.	CK.	REF.	DRAWN	CHECKED	R. P. O.	SHEET
4-9-57	1	WAS 3744847	9110		F		V	F		
3-25-57		RELEASED	8670 6814	6772						
						DATE	PART No.	3726900	684	2.00
						1-24-57				



HEAVY DUTY BRAKE & SUSPENSION - AIR DUCT FLANGE

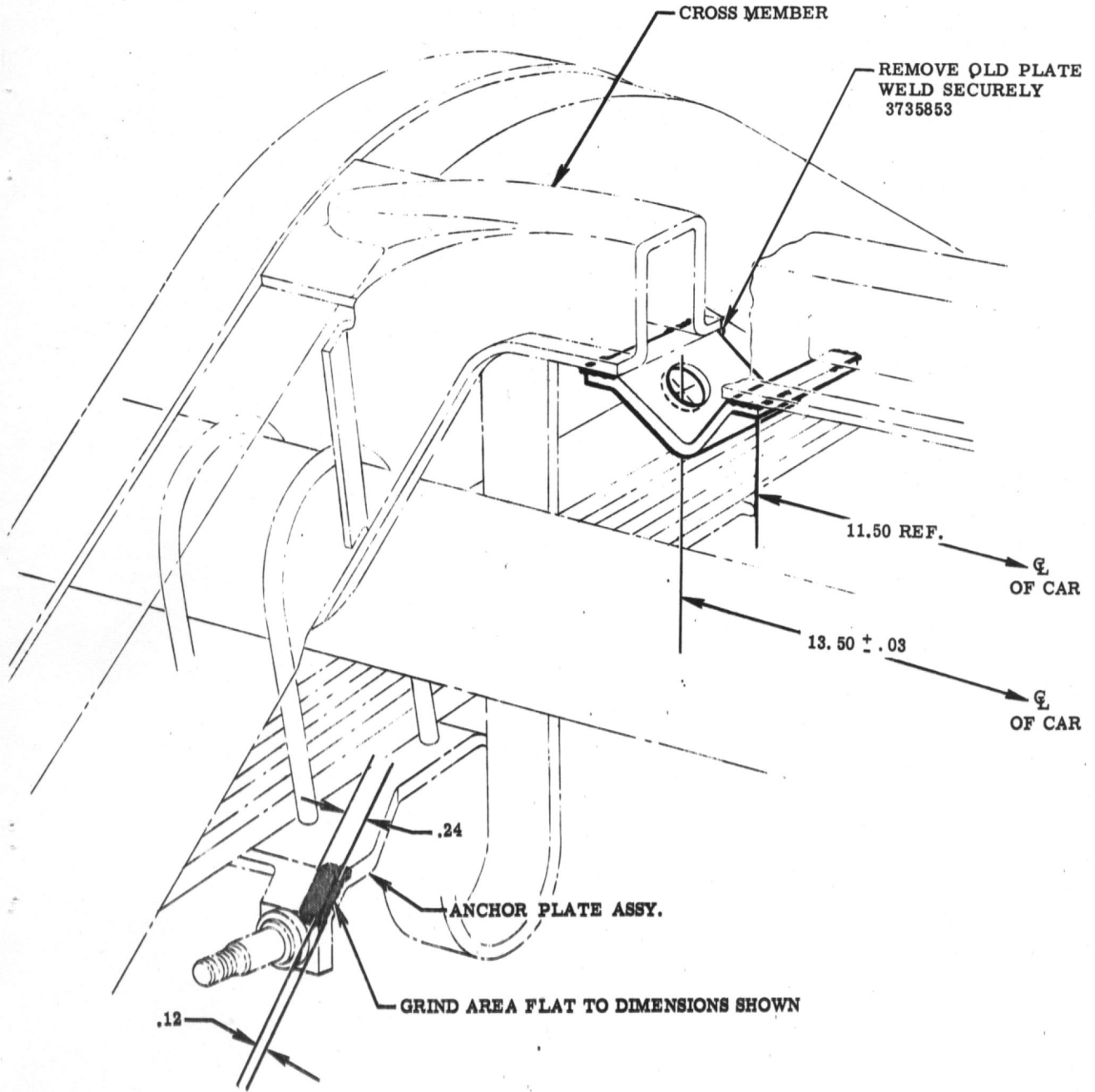
					NAME					CORVETTE INSTRUCTION MANUAL				
					REF.		DRAWN		CHECKED		R. P. O.		SHEET	
							V		F					
3-25-57		RELEASED			6772		DATE		PART No.		684		3.00	
DATE	SYM.	REVISION RECORD			AUTH.	DR.	CK.	1-24-57		3726900				



VIEW A

HEAVY DUTY BRAKE & SUSPENSION - AIR DUCT

					NAME CORVETTE INSTRUCTION MANUAL				
					REF.	DRAWN	CHECKED	R. P. O.	SHEET
						V	F		
3-25-57	RELEASED	8517	6772		DATE	PART No.	684 4.00		
DATE	SYM.	REVISION RECORD	AUTH.	DR.	CK.	1-24-57	3726900		



**HEAVY DUTY BRAKE & SUSPENSION -
REAR SHOCK ABSORBER PLATES**

					NAME				CORVETTE INSTRUCTION MANUAL				
					REF.	DRAWN		CHECKED		R. P. O.		SHEET	
					L-45851	V		F		684		5.00	
4-30-57		RELEASED	9042		DATE	PART No.		3726900					
DATE	SYM.	REVISION RECORD	AUTH.	DR. CK.	4-10-57								