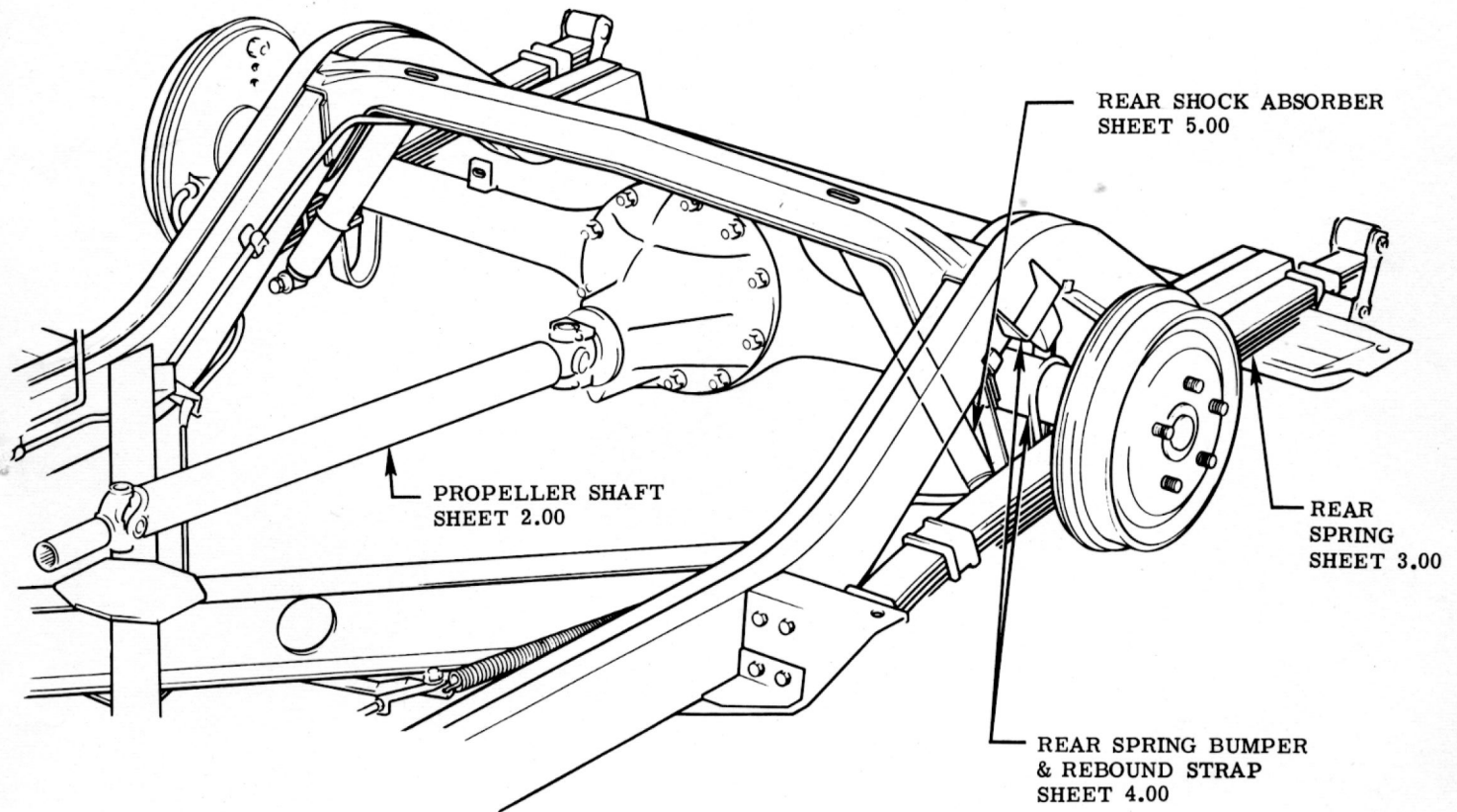


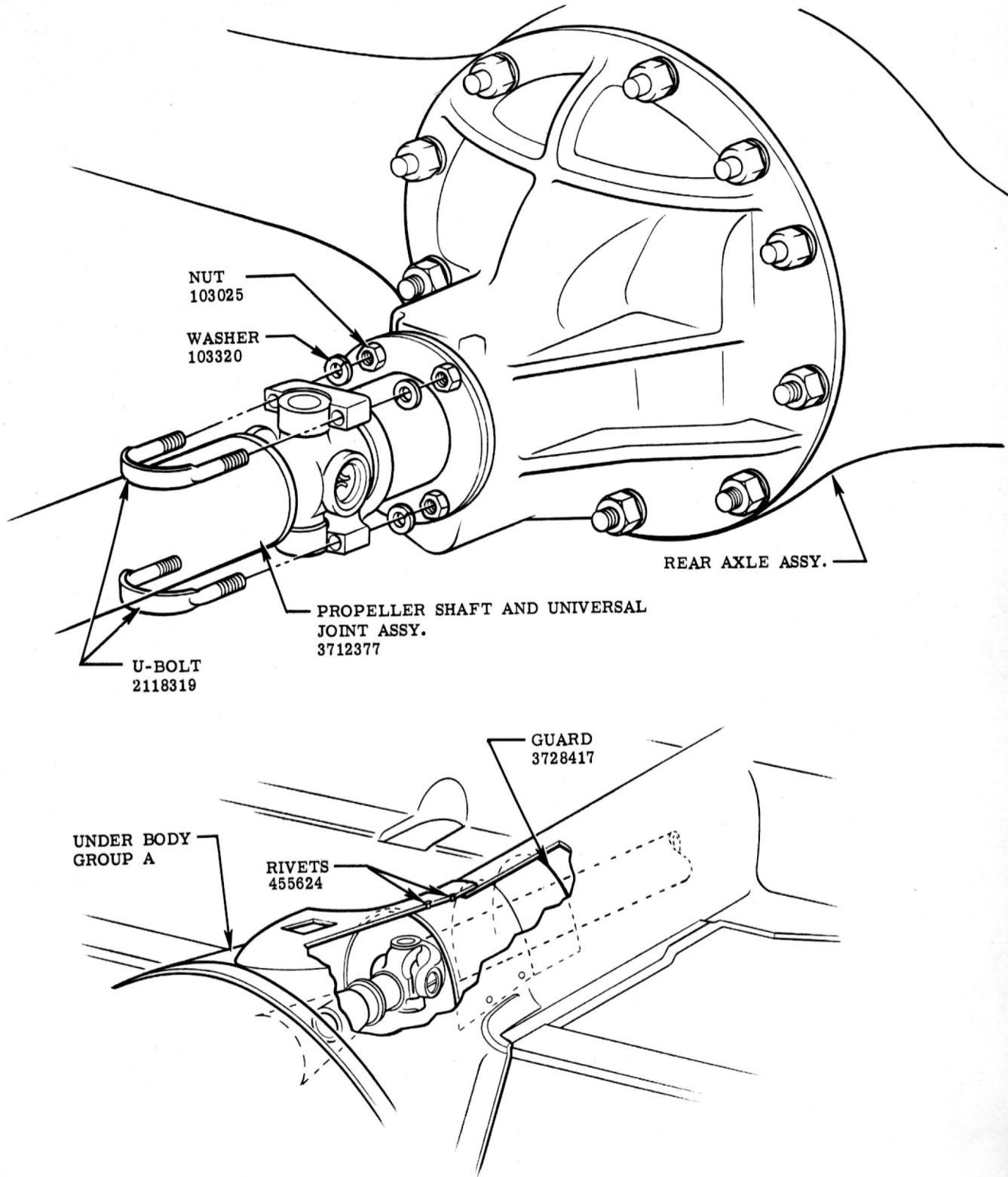
WALKER BROTHERS  
MANUFACTURERS

4 REAR  
SUSPENSION



**REAR SUSPENSION**

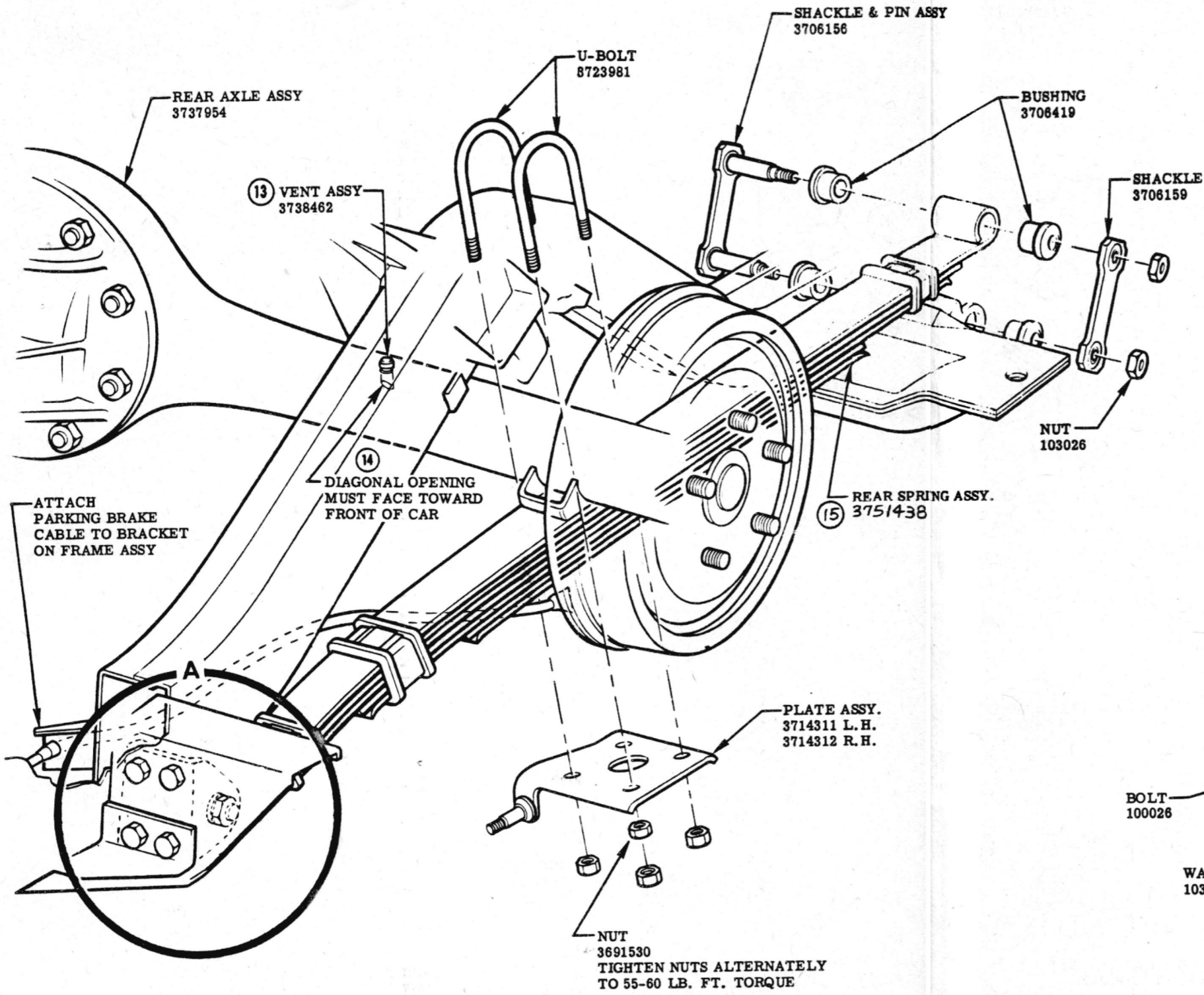
						NAME	CORVETTE INSTRUCTION MANUAL			
						REF.	DRAWN O. W.	CHECKED N. D.	SECT.	SHEET
						DATE	PART No.	3726900	4	1.00
DATE	SYM.	REVISION RECORD	AUTH.	DR.	CK.	9-15-55				



SEE LUBRICATION CHART SECTION 14  
**PROPELLER SHAFT**

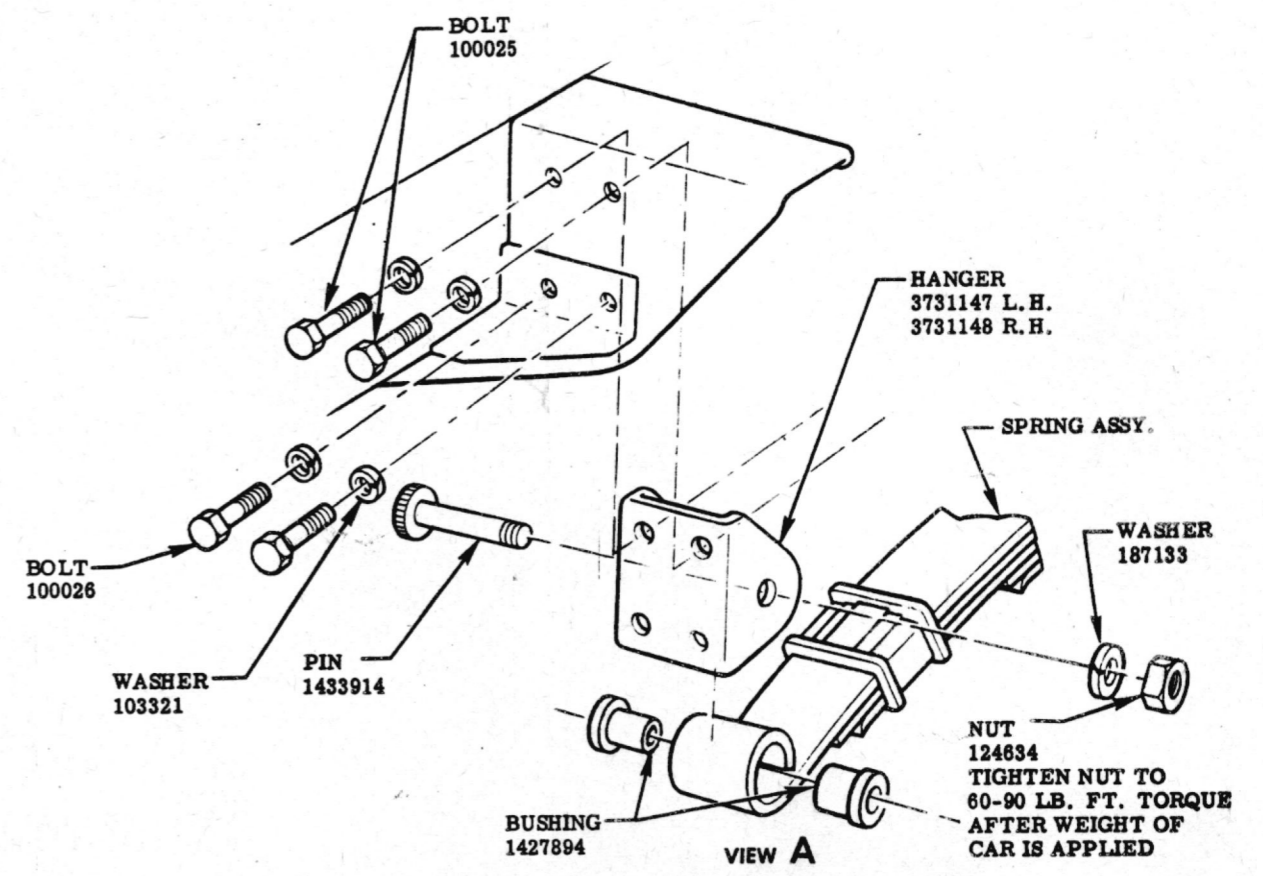
						NAME				CORVETTE INSTRUCTION MANUAL			
						REF.	DRAWN W.S.	CHECKED N.D.	SECT.	SHEET			
						DATE	PART No.		4	2.00			
						9-15-55	3726900						
DATE	SYM.	REVISION RECORD			AUTH.	DR.	CK.						

Schwartz



SHACKLE ASSEMBLY INSTRUCTION

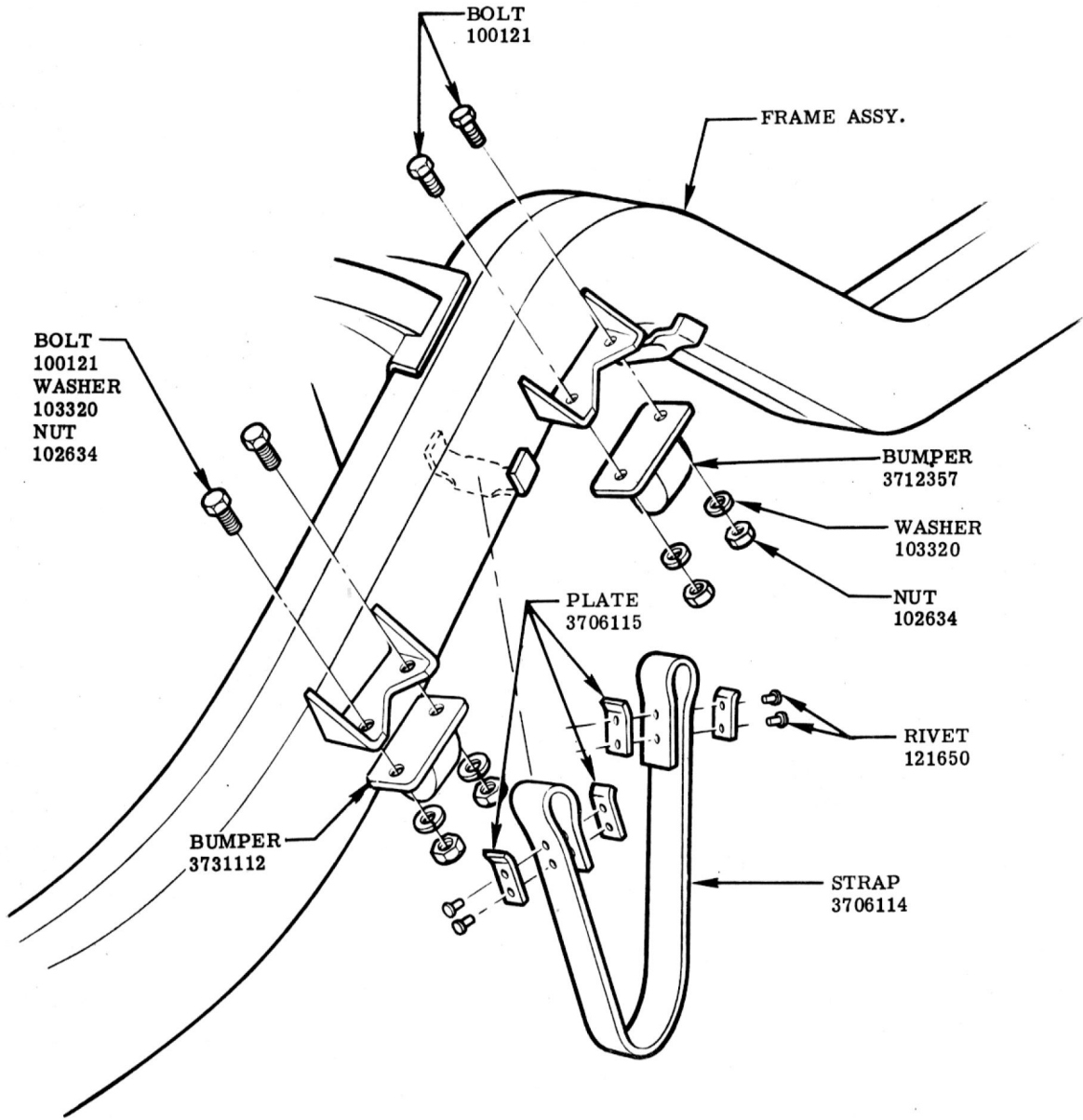
1. CLEAN CENTERS & EDGES OF BOTH SPRING EYES.
2. CLEAN EYE OF REAR SPRING REAR HANGER.
3. PLACE ONE BUSHING ON EACH BOLT OF THE SHACKLE & PIN ASSY. & INSERT ASS'Y. INTO HANGER & SPRING.
4. ASSEMBLE REMAINING BUSHINGS & SHACKLE.
5. TIGHTEN NUTS ALTERNATELY, TO PREVENT COCKING OR BINDING, TO A TORQUE OF 25 - 30 LB. FT. WITH A SLOW SPEED WRENCH.



SEE LUBRICATION CHART SECTION 14

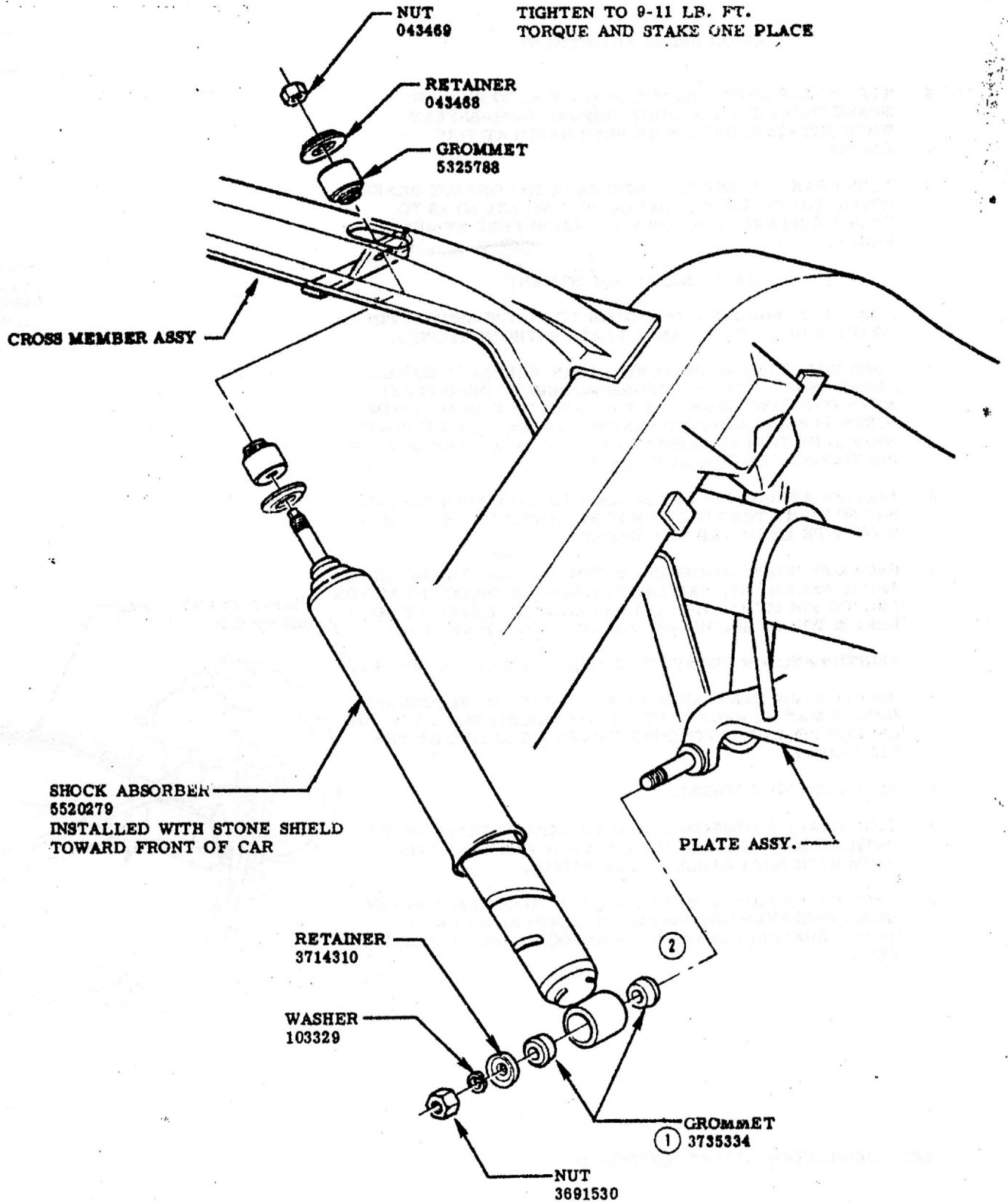
REAR SPRING & REAR AXLE

DATE		SYM.	REVISION RECORD	AUTH.	DR.	CK.	NAME	CORVETTE INSTRUCTION MANUAL			SECT.	SHEET
6-18-57	15		WAS 3711550	2071		F	REF.	DRAWN	CHECKED	N. D.	4	3.00
	14		NOTE ADDED			F		O. W.				
	13		WAS 3700490				DATE	PART No.	3726900			
11-15-56	12		REDRAWN	5223	V		9-15-55					



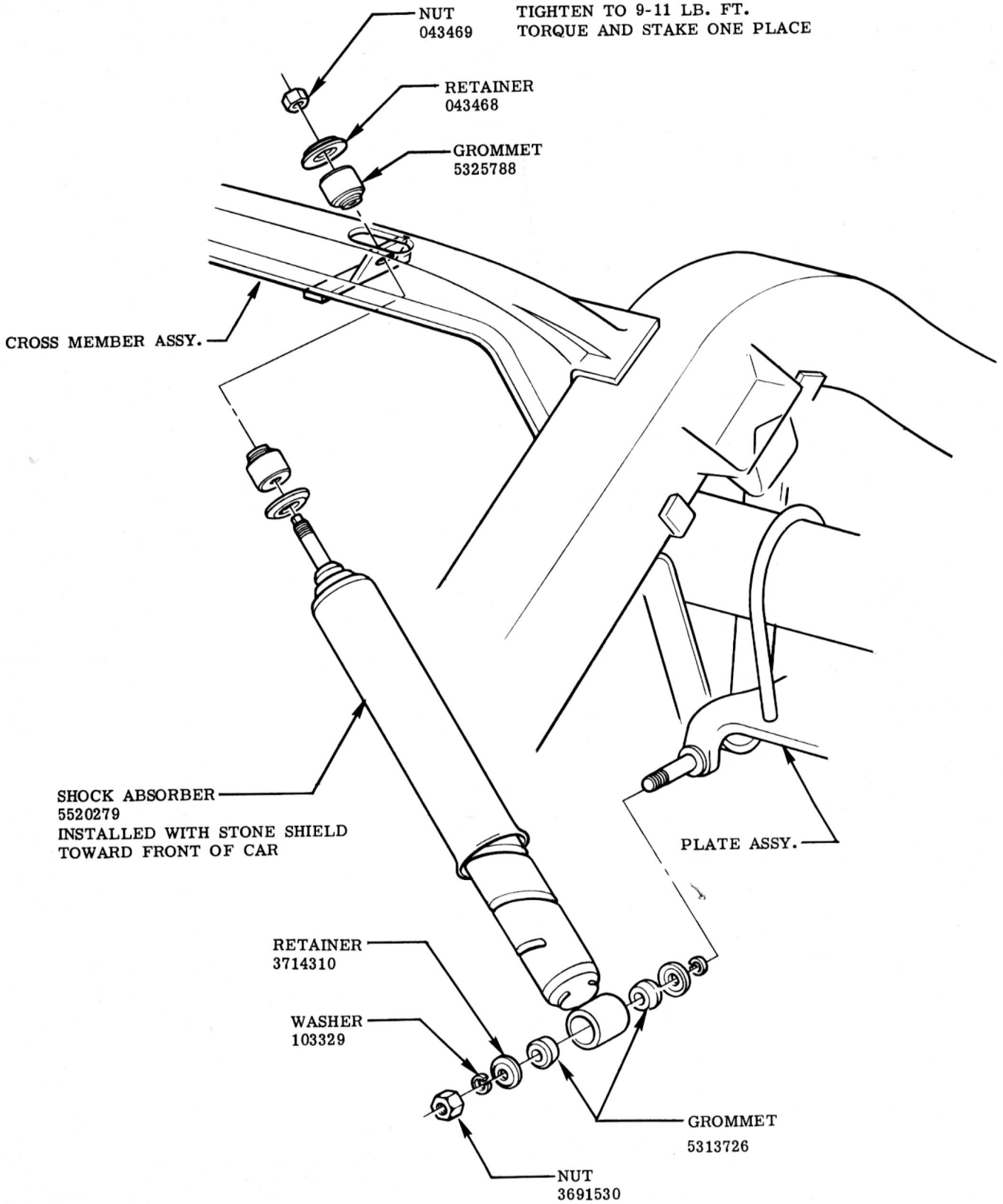
**BUMPERS & REBOUND STRAP.**

						NAME	CORVETTE INSTRUCTION MANUAL			
						REF.	DRAWN O. W.	CHECKED N. D.	SECT.	SHEET
4-2-57	5	REDRAWN & REVISED	374	V	F	DATE	PART No.		4	4.00
DATE	SYM.	REVISION RECORD	AUTH.	DR.	CK.	9-15-55	3726900			



**REAR SHOCK ABSORBER.**

					NAME CORVETTE INSTRUCTION MANUAL				
					REF.	DRAWN O. W.	CHECKED N. D.	SECT.	SHEET
3-12-56	2	VIEW REVISED		F	DATE	PAR. N.	3726900	4	5.00
3-27-56	1	WAS 5313726	7445	F	9-15-55				
DATE	SYM.	REVISION RECORD	AUTH.	DR.	CK.				



**REAR SHOCK ABSORBER**

						NAME	CORVETTE INSTRUCTION MANUAL			
						REF.	DRAWN O. W.	CHECKED N. D.	SECT.	SHEET
						DATE	PART No.		4	5.00
DATE	SYM.	REVISION RECORD	AUTH.	DR.	CK.	9-15-55	3726900			